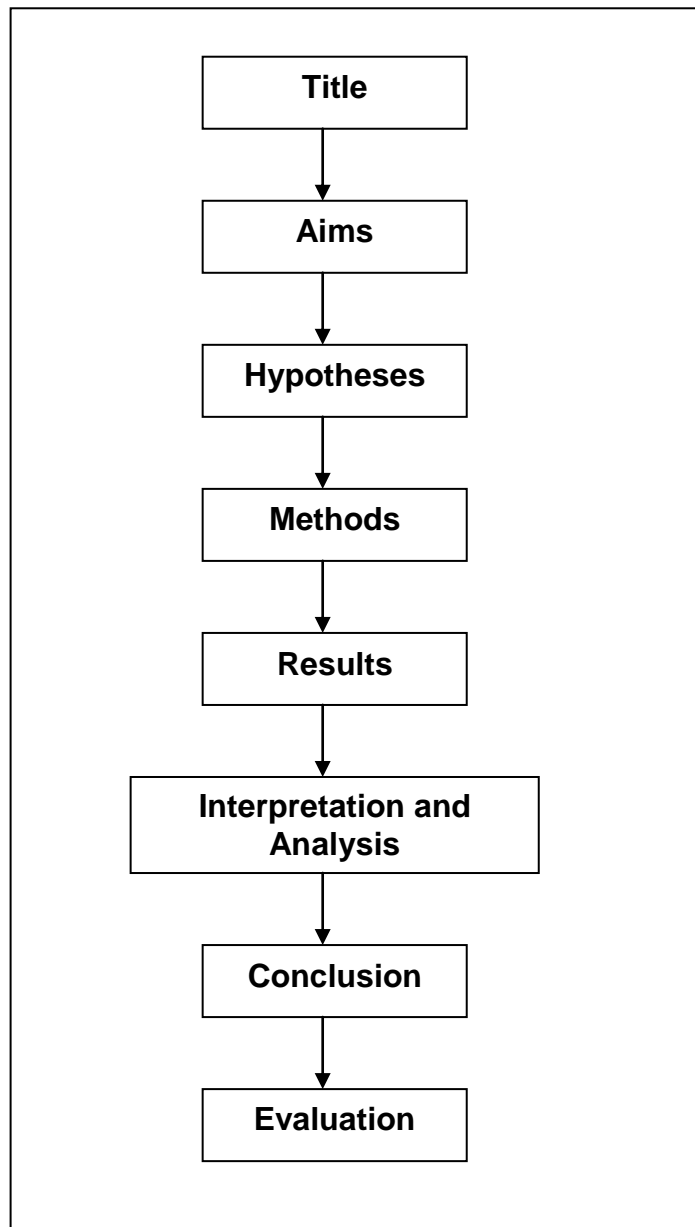


Investigation write-up

The data which you have collected during your fieldwork can be written up as a formal investigation, a bit like a report. You might have done something like this before, perhaps in Science after an experiment.

There is a 'structure' which needs to be followed when writing up your investigation, shown in the diagram below...



It may seem complicated, but don't worry! Following the structure above and treating each part as 'sections' or 'chapters' to your write-up will help it to look more 'professional' and gain you marks. Read the next page which tells you exactly what you should put in each section.

Title

An appropriate, concise title for your investigation. It's often a good idea to phrase it as a QUESTION, to be investigated, e.g. 'What can lichens tell us about environmental conditions in our local area?', or 'What are the differences in the environmental conditions between sites A and B?'

Aims

2-3 sentences to explain WHAT you are aiming to find out in your investigation – try to break your title down to explain exactly what you're going to do. For example, 'to record lichen species found on trunks and twigs of trees in two contrasting locations' could be one aim.

Hypotheses

2-3 PREDICTIONS about what you think you'll find – these can be linked to each of the aims you wrote. For example, 'there will be more pollution – tolerant species of lichen found at site A'. You can justify your hypotheses, saying why you made each prediction.

Method

Step-by-step description of HOW you carried out the fieldwork.

Results

The PRESENTATION of your data in different forms, e.g. GRAPHS, CHARTS, MAPS, DIAGRAMS. It's a good idea to try to include a variety of techniques to present your findings – it shows that you're able to do this, and also makes it more interesting and impressive.

Interpretation and analysis

The interpretation is where you say WHAT your results show, and the ANALYSIS is where you try to give REASONS for the results you have found.

Conclusion

You should make links and reference back to your original aims and hypotheses. This is where you SUMMARISE your main findings and 1) answer the question you posed in the title, and 2) prove or disprove your hypotheses

Evaluation

This is a CRITIQUE of your investigation. The good and bad points (the limitations), what you'd improve on / expand on next time.