



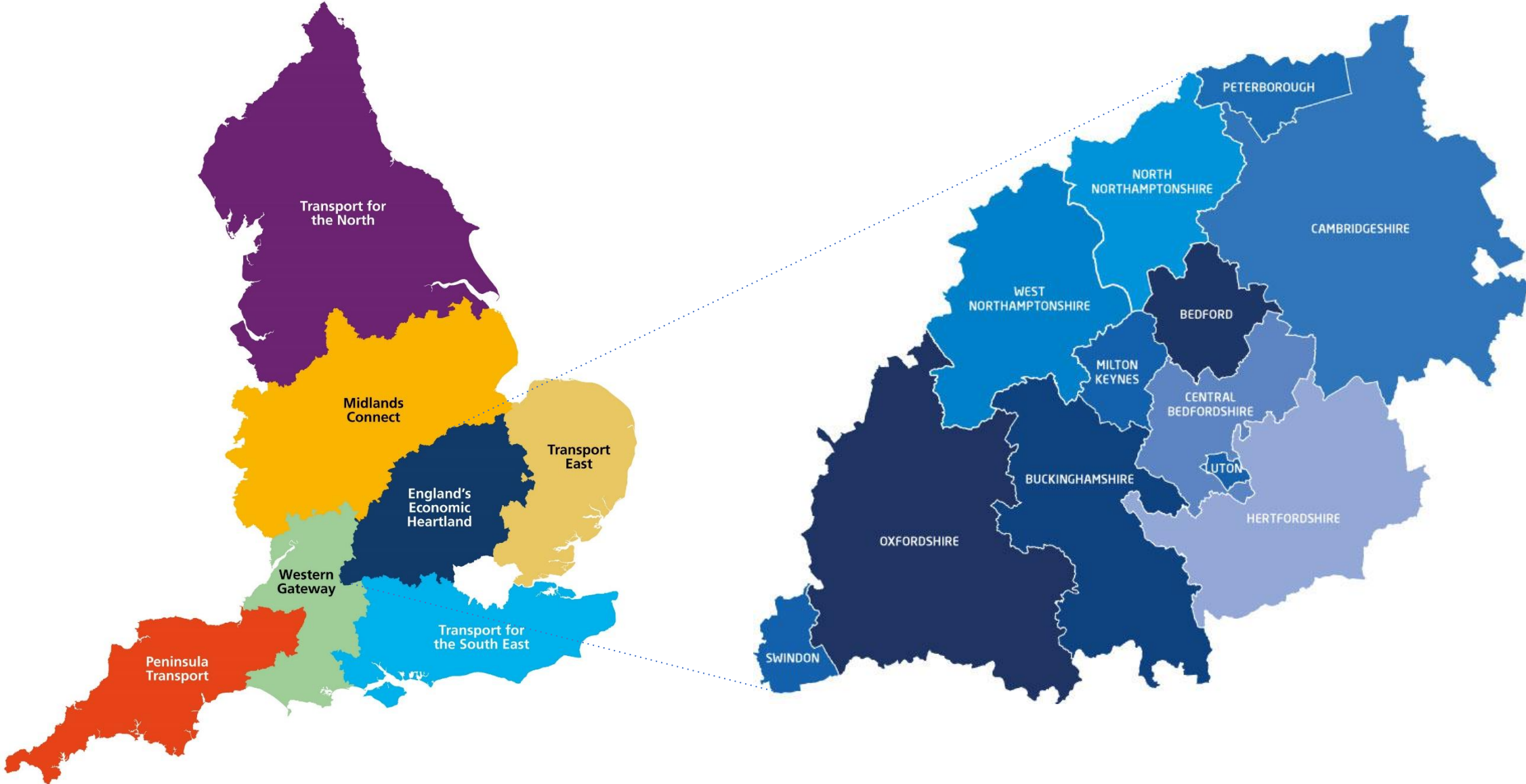
Mobility

Hubs

Trevor Brennan
Project Lead

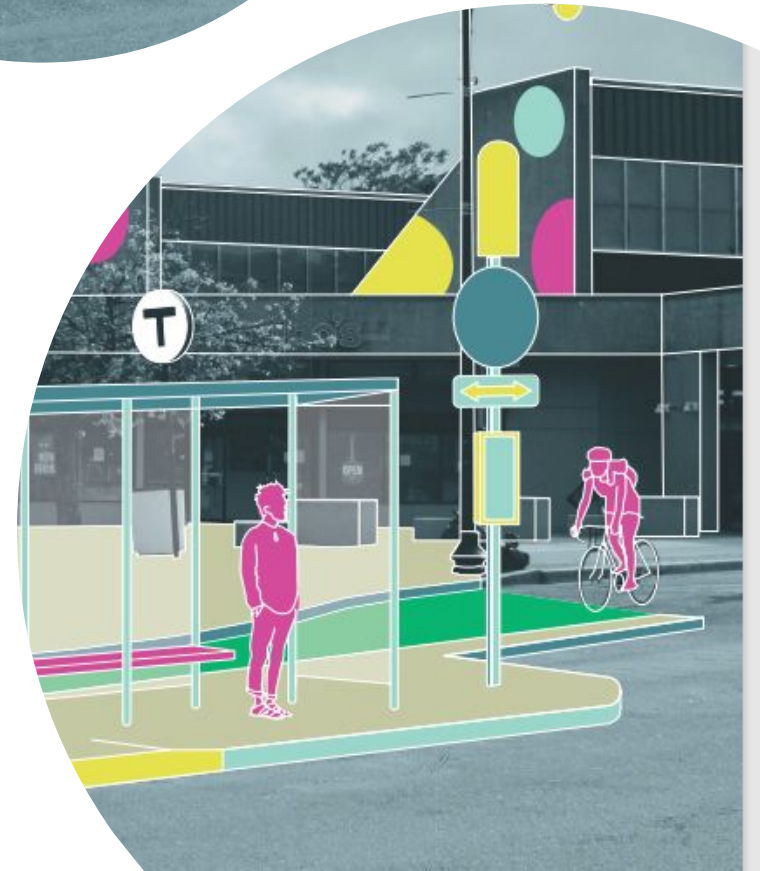


Who are England's Economic Heartland ?



What is a Mobility Hub?

“Mobility hubs are highly visible, safe and accessible spaces where public, shared and active travel modes are co-located alongside improvements to public realm and where relevant enhanced community facilities can be found.”




Features of a Mobility Hub

- Bus and train connectivity
- Bike share (inc. e-bike)
- Lift share
- Car club
- E-scooter share (future provision)
- EV charging
- DDRT
- Cycle parking and storage
- Parcel lockers
- Facilities
 - WCs
 - Café
 - Vendors or vending machines
 - Wayfinding
 - Shared office space



Mobility hub locations

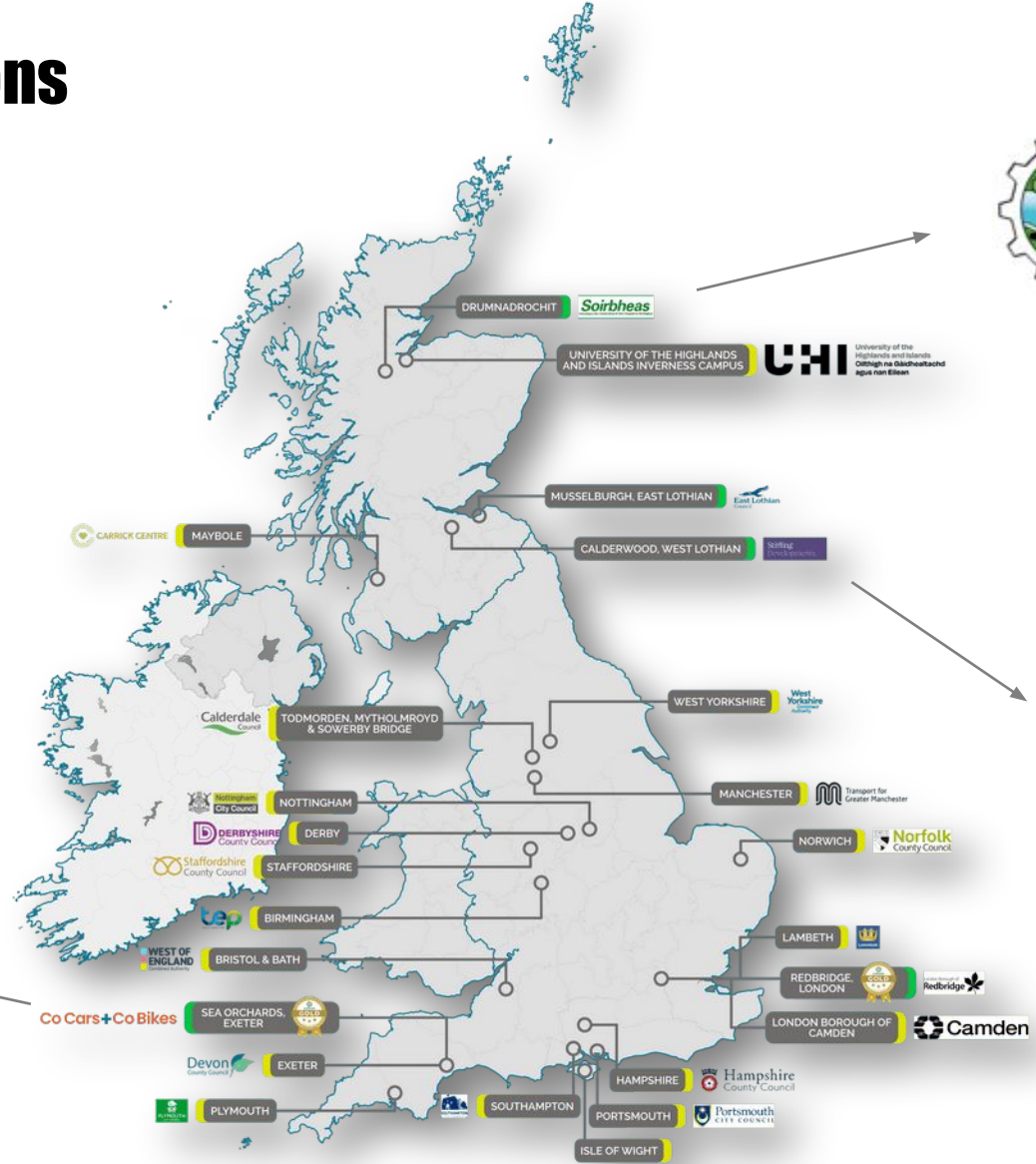
 Projects in development - funding committed / planning in place

 Live



- Powered by 100 % renewable energy
- Electric shared car and bike hire
- EV chargers
- Close to dedicated cycle routes and bus stop, with frequent connections to both Exeter and Exmouth

Devon County Council/
Bloor Homes/Darts Farm



LOCH NESS HUB & TRAVEL
COMMUNITY OWNED & RUN

- Baggage and shuttle transfers for the Great Glen Way
- E-bike hire
- Visitor information services

Loch Ness Hub and Travel is a community benefit company



- Station House Project (converted local train station house)
- Bar/bistro, a cycle business/hub, art studio/workshops and exhibition space.
- Stow Community ebikes hire

Community Trust is a company limited by guarantee

Ref: CoMoUK is a registered charity in England and Wales (no. 1093980) and Scotland (no. SC044682)

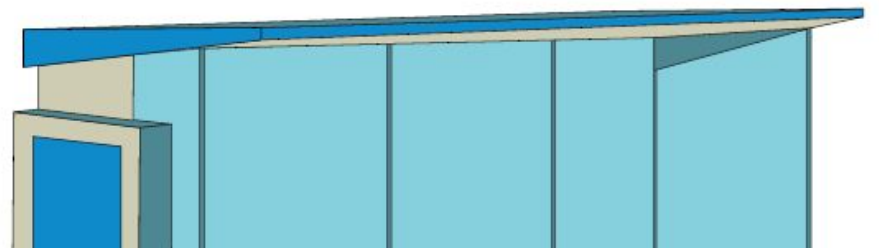
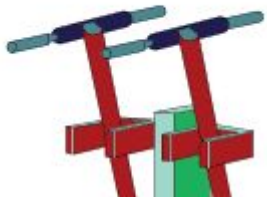


Key Benefits



- Helps reclaim space from private cars
- Promote equitable modes of transportation
- Seamless transfers between different modes
- Act a "first or last mile" connections to buses or trains
- Safer and more comfortable waiting areas
- Allow for reorganisation of space
- Helping to address cluttering streets scape (dockless micromobility)
- A natural home for electric vehicle charging infrastructure

Pivotal in creating a more connected, efficient, and environmentally friendly transportation network.

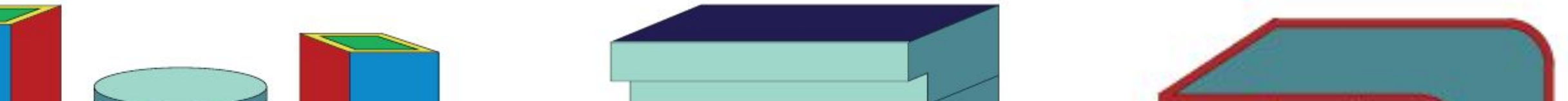


Key Challenges



- Suitable locations are hard to come by, due to competing land uses
- Collaboration among stakeholders (complex)
- Providing accessible facilities and affordable services, is a challenge.
- Overcoming car dependency can be an uphill battle
- Integrating (schedules, ticketing travel information) can be technically demanding
- Convincing the public of the benefits and addressing any scepticism is crucial
- Ensuring long-term funding to build and maintain facilities (cleanliness, safety) requires ongoing attention.

While mobility hubs hold immense promise, overcoming these challenges requires strategic planning, collaboration, and adaptability.





Mobility Hubs Business Case Guidance

England's Economic Heartland



What are mobility hubs?

Mobility hubs are increasingly being promoted in the UK to help provide solutions to some of our most challenging transport issues.

"Mobility hubs are highly visible, safe, and accessible spaces where public, shared and on-demand modes and conventional public transport for the private motor, along with community facilities where relevant. The hub design and distribution of their users. Some hubs provide car parking for taxis and bicycles and others provide shared car parking for all users." (Source: Calthorpe)



Choice of sustainable modes
Including high capacity transport, shared vehicles, on-demand, and bike parking provision



Visibility and accessibility
Hubs require a part of a recognizable network with clear signage and lighting, disabled access and active travel routes



Ease of switching between modes
Beats in terms of physical and digital linking the use of the infrastructure



Safety
The design and layout should ensure that the hub is safe for all users and is well lit and covered to ensure safety



Practical facilities
Good design will consider how non-transportational activities can be included, such as shelter, Wi-Fi, or a space to sit and charge a mobile phone



Visual, social and community appeal
Consider the way mobility hubs can contribute to the local environment and the wider community fabric

Role of the business case

A business case should set out the case for investment in mobility hubs. It should provide a clear rationale for the investment and the expected benefits. The business case should also provide a clear rationale for the investment and the expected benefits.

Over the course of preparing a business case, it is important to consider a range of options and to assess their relative merits. The business case should also provide a clear rationale for the investment and the expected benefits.

The business case should also provide a clear rationale for the investment and the expected benefits.

The business case should also provide a clear rationale for the investment and the expected benefits.

The business case should also provide a clear rationale for the investment and the expected benefits.

The business case should also provide a clear rationale for the investment and the expected benefits.

The business case should also provide a clear rationale for the investment and the expected benefits.

The business case should also provide a clear rationale for the investment and the expected benefits.

The business case should also provide a clear rationale for the investment and the expected benefits.

The business case should also provide a clear rationale for the investment and the expected benefits.

The business case should also provide a clear rationale for the investment and the expected benefits.

The business case should also provide a clear rationale for the investment and the expected benefits.

The business case should also provide a clear rationale for the investment and the expected benefits.

The business case should also provide a clear rationale for the investment and the expected benefits.

The business case should also provide a clear rationale for the investment and the expected benefits.

The business case should also provide a clear rationale for the investment and the expected benefits.

The business case should also provide a clear rationale for the investment and the expected benefits.

The business case should also provide a clear rationale for the investment and the expected benefits.

The business case should also provide a clear rationale for the investment and the expected benefits.

The business case should also provide a clear rationale for the investment and the expected benefits.

The business case should also provide a clear rationale for the investment and the expected benefits.

The business case should also provide a clear rationale for the investment and the expected benefits.

The business case should also provide a clear rationale for the investment and the expected benefits.

The business case should also provide a clear rationale for the investment and the expected benefits.

The business case should also provide a clear rationale for the investment and the expected benefits.

The business case should also provide a clear rationale for the investment and the expected benefits.

The business case should also provide a clear rationale for the investment and the expected benefits.

The business case should also provide a clear rationale for the investment and the expected benefits.

The business case should also provide a clear rationale for the investment and the expected benefits.

This document focuses on the approach to be taken for the strategic, economic, and financial case, and the business case should be used to inform the commercial and management cases.

The DfC checks and tests on the conclusions made at DfC stage. Detailed economic and financial appraisals will be undertaken, and a preferred option selected, including the DfC's approach to delivery.

The DfC confirms the conclusions made in the DfC based on the government process.



Challenges of t

While the business case approach provides a framework for transport projects, there are particular challenges for mobility hubs, e.g. securing reliable, long-term funding from multiple funders and for



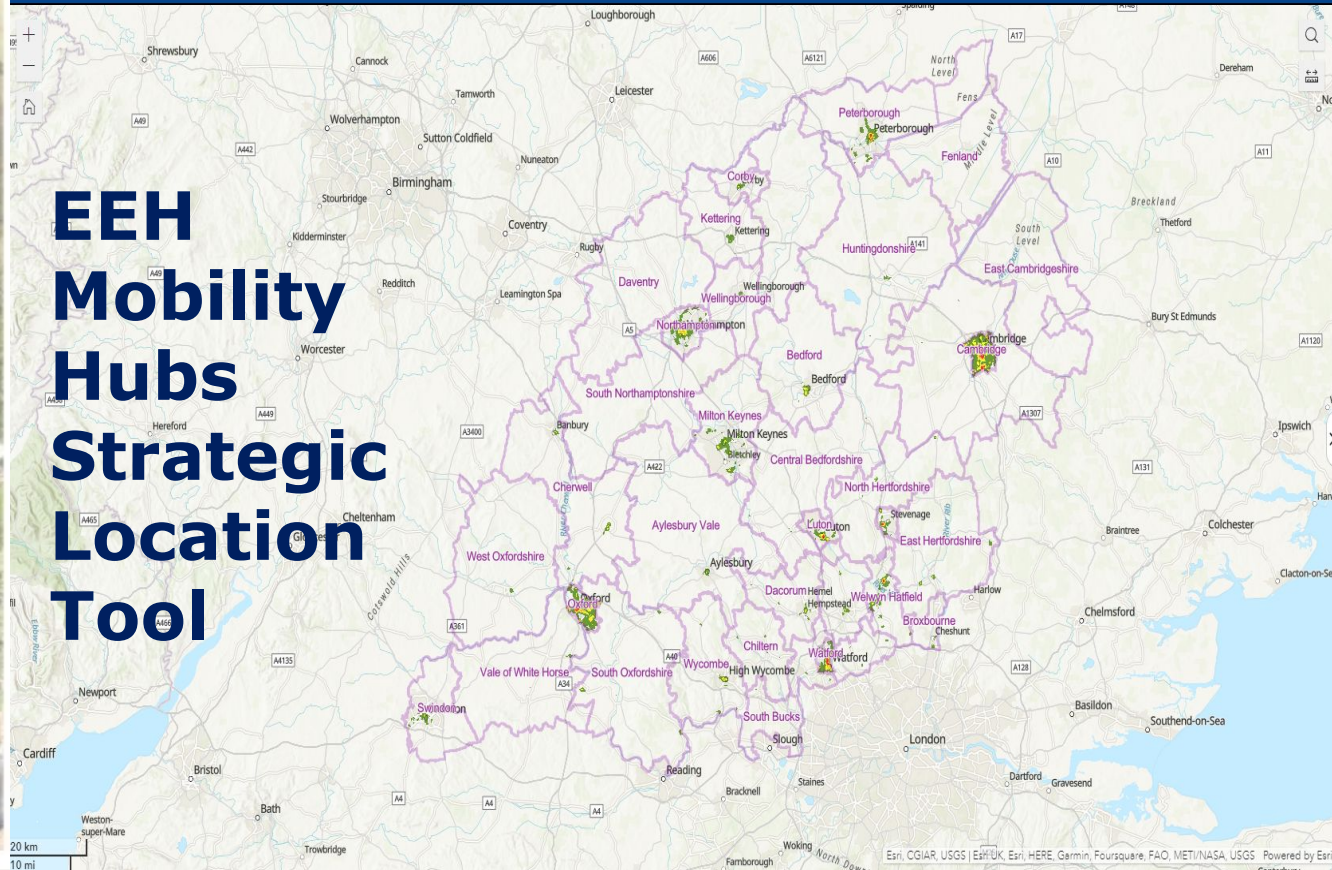
Less established precedents exist for the quantification of benefits likely to be associated with the introduction of mobility hubs, e.g. carbon reduction, new trip opportunities, and trip chaining benefits.



Challenges



EEH Mobility Hubs Strategic Location Tool

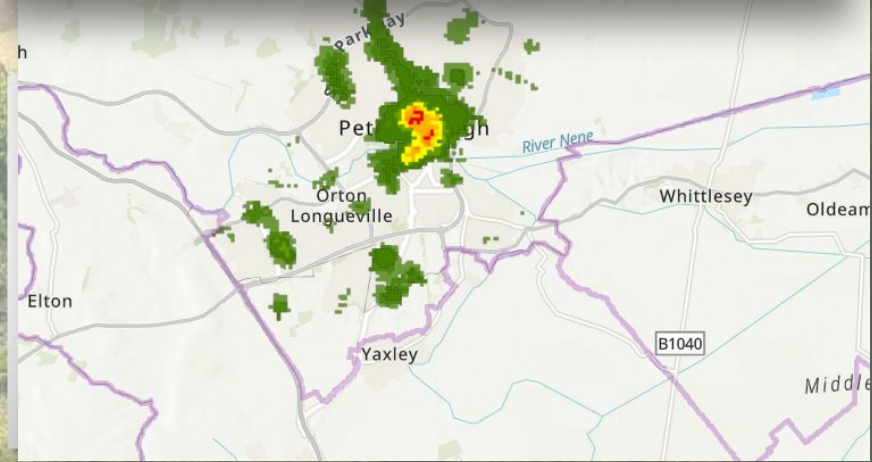
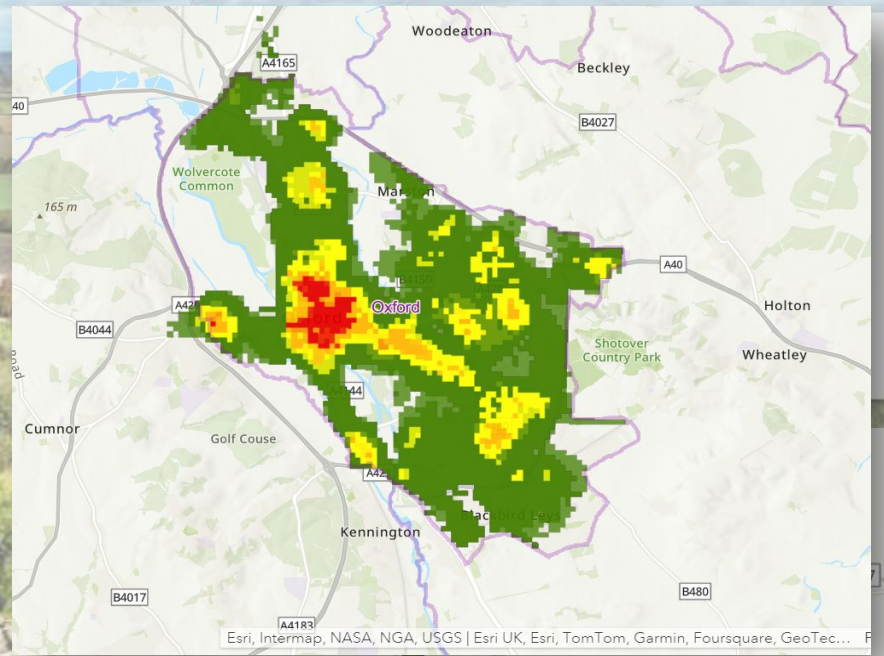


Layer List	
Local Authorities	...
Scenario 1 Base	...
Scenario 2 Rural Mobility Hubs	...
Scenario 3 First Mile	...
Scenario 4 Last Mile	...

Legend

Local Authorities	
	Local Authority Boundary

Scenario 4 Last Mile	
	Most Suitable
	Moderately Suitable
	Suitable
	Less Suitable
	Not Suitable



Thankyou

