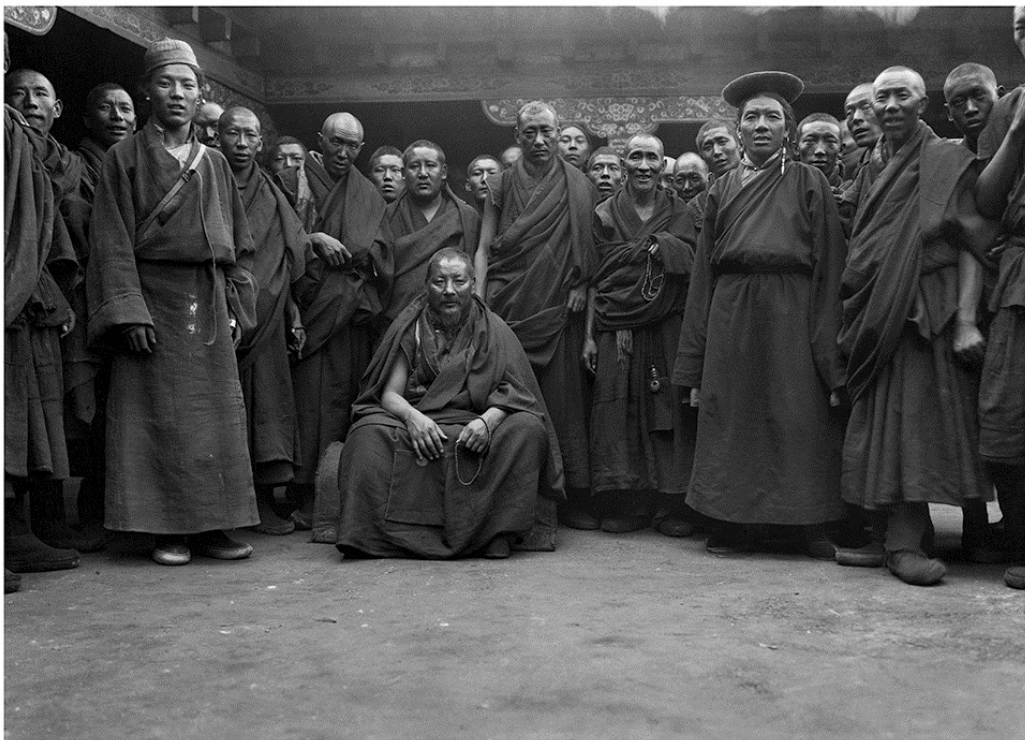


# The 1921 British Mount Everest Expedition

## Limited Edition Platinum Prints



(1) **'Monks and the Administrator at Shekar Tschöde Monastery.'**

Photographer: Charles Kenneth Howard-Bury (1881-1963)

Celluloid Negative, MEE21/0339

**TO ORDER**

For provenance and edition information please contact: [images@rgs.org](mailto:images@rgs.org)

# The 1921 British Mount Everest Expedition

## Limited Edition Platinum Prints



### (2) *'Members of Expedition at 17,300 ft. Camp.'*

Top, left to right: Wollaston, Howard-Bury, Heron, Raeburn.

Bottom, left to right: Mallory, Wheeler, Bullock, Morshead.

Photographer: Alexander Frederick Richmond Wollaston (1875-1930)

Celluloid Negative, MEE21/0396

**TO ORDER**

For provenance and edition information please contact: [images@rgs.org](mailto:images@rgs.org)

# The 1921 British Mount Everest Expedition

## Limited Edition Platinum Prints



### (3) 'A group of Bhutias, Linga.'

Photographer: George Leigh Mallory (1886-1924)

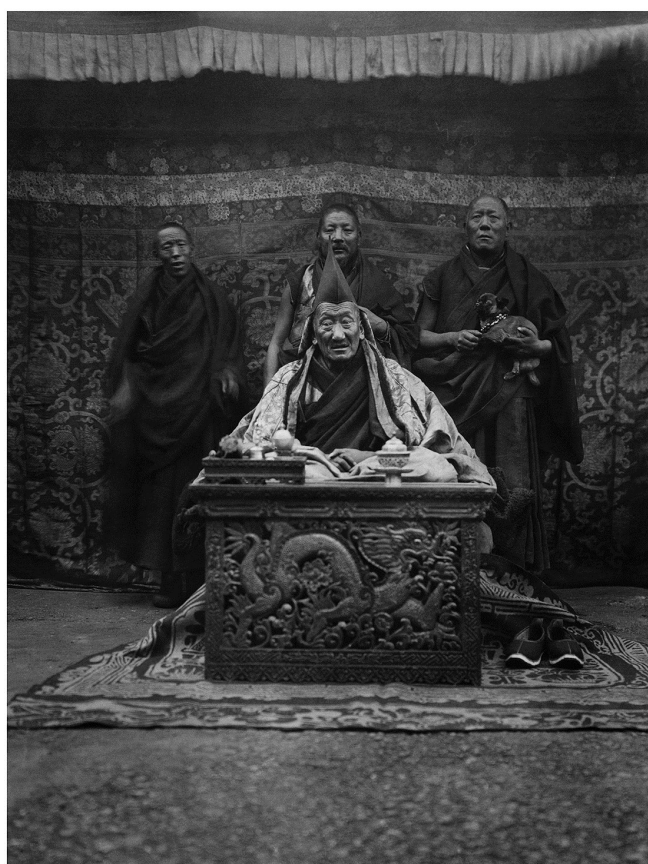
Celluloid Negative, MEE21/0587

**TO ORDER**

For provenance and edition information please contact: [images@rgs.org](mailto:images@rgs.org)

# The 1921 British Mount Everest Expedition

## Limited Edition Platinum Prints



### (4) 'The Abbot of Shekar Chote.'

Photographer: Charles Kenneth Howard-Bury (1881-1963)  
Celluloid Negative, MEE21/0327

**TO ORDER**

For provenance and edition information please contact: [images@rgs.org](mailto:images@rgs.org)

# The 1921 British Mount Everest Expedition

## Limited Edition Platinum Prints



(5) Above: **Untitled.**

Photographer: George Leigh Mallory (1886-1924)  
Celluloid Negative, MEE21/0907

Below: **'Looking down Arun Valley from slopes south of Shiling.'**

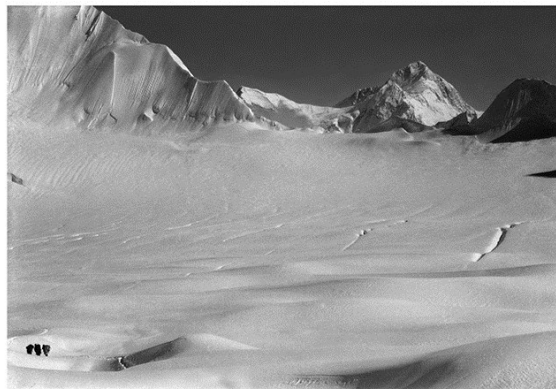
Photographer: George Leigh Mallory (1886-1924)  
Celluloid Negative, MEE21/0641

**TO ORDER**

For provenance and edition information please contact: [images@rgs.org](mailto:images@rgs.org)

# The 1921 British Mount Everest Expedition

## Limited Edition Platinum Prints



(6) Above: **'Makalu.'**

Photographer: George Leigh Mallory (1886-1924)  
Glass Plate Negative, MEE21/0666

Below: **Makalu.**

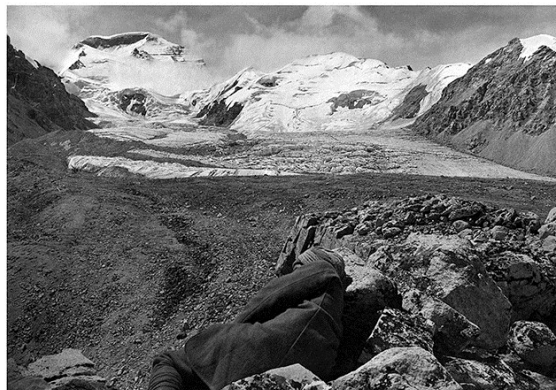
Photographer: George Leigh Mallory (1886-1924)  
Celluloid Negative, MEE21/0842

**TO ORDER**

For provenance and edition information please contact: [images@rgs.org](mailto:images@rgs.org)

# The 1921 British Mount Everest Expedition

## Limited Edition Platinum Prints



(7) Above: **Team member in foreground with Mount Everest, Kangshung Face and Lhotse from the Karta Glacier.**

Photographer: Edward Oliver Wheeler (1890-1962)

Glass Plate Negative, MEE21/0482

Below: **'Cho Uyo from Dirty Glacier Summit on east slope Kyetrak Glacier opposite Cho Rabsang.'**

Photographer: Edward Oliver Wheeler (1890-1962)

Glass Plate Negative, MEE21/0411

**TO ORDER**

For provenance and edition information please contact: [images@rgs.org](mailto:images@rgs.org)

# The 1921 British Mount Everest Expedition

## Limited Edition Platinum Prints



(8) Above: **'Temple at Lapchi Kang.'**

Photographer: Alexander Frederick Richmond Wollaston (1875-1930)  
Celluloid Negative, MEE21/0087

Below: **'Kampa Dzong.'**

Photographer: George Leigh Mallory (1886-1924)  
Celluloid Negative, MEE21/0597

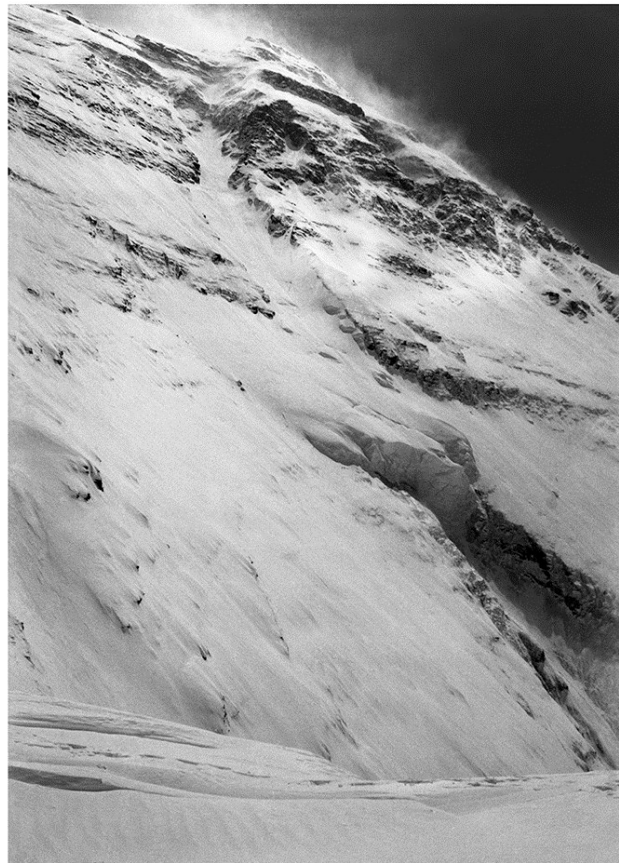
**TO ORDER**

For provenance and edition information please contact: [images@rgs.org](mailto:images@rgs.org)



# The 1921 British Mount Everest Expedition

## Limited Edition Platinum Prints



(9) 'View of Everest summit (top) and Great Couloir  
in centre of North Face.'

Photographer: George Leigh Mallory (1886-1924)

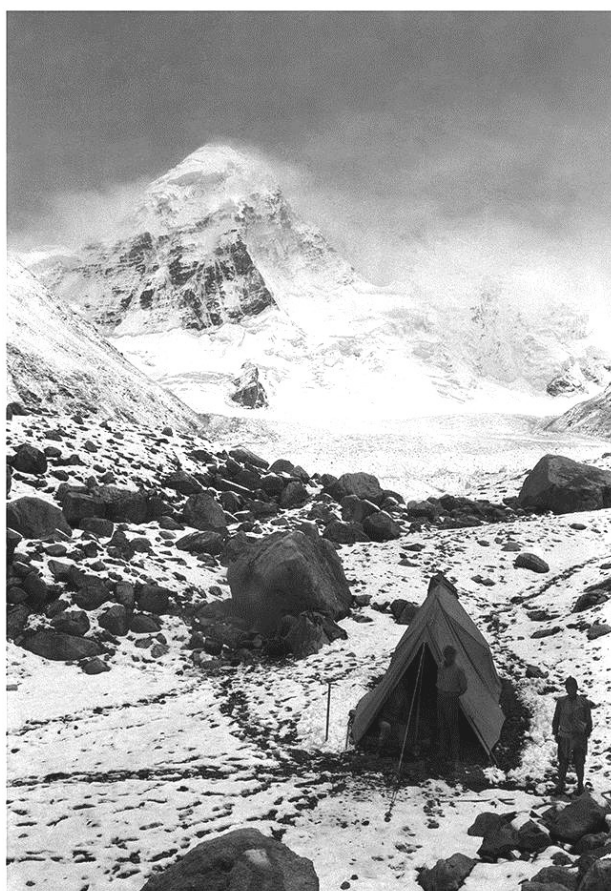
Celluloid Negative, MEE21/0820

**TO ORDER:**

For provenance and edition information please contact: [images@rgs.org](mailto:images@rgs.org)

# The 1921 British Mount Everest Expedition

## Limited Edition Platinum Prints



(10) 'Second Advanced Camp, West Rongbuk Glacier,  
18,500 feet.'

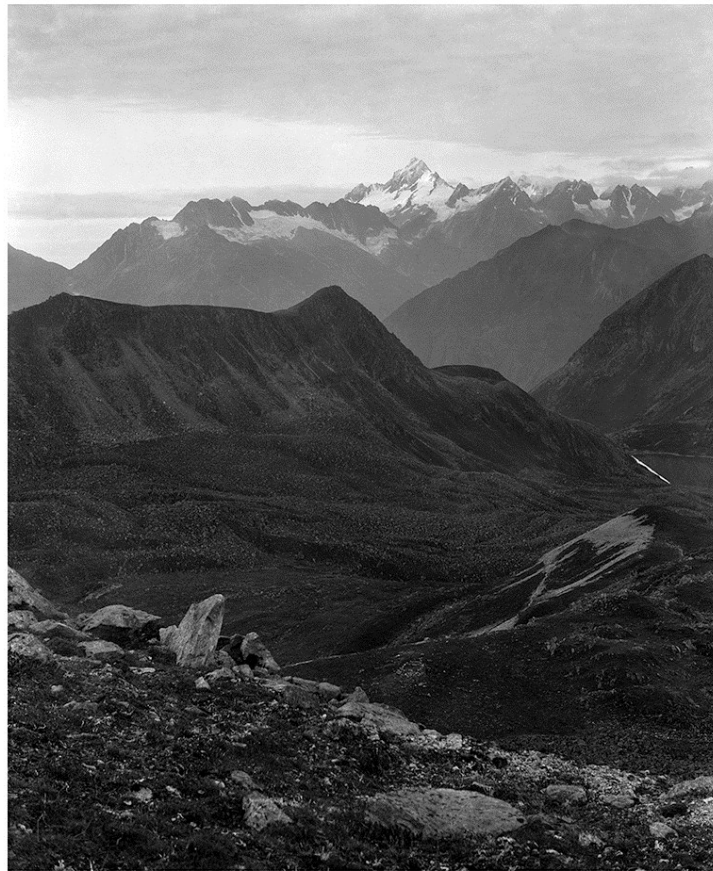
Photographer: George Leigh Mallory (1886-1924)  
Celluloid Negative, MEE21/0637

**TO ORDER:**

For provenance and edition information please contact: [images@rgs.org](mailto:images@rgs.org)

# The 1921 British Mount Everest Expedition

## Limited Edition Platinum Prints



(11) 'View from 17,000 ft. looking across Kama Valley to 21,000 ft. peak on Nepal frontier.'

Photographer: Charles Kenneth Howard-Bury (1881-1963)  
Celluloid Negative, MEE21/0557

**TO ORDER**

For provenance and edition information please contact: [images@rgs.org](mailto:images@rgs.org)

**SALTO**  
ULBEEK

# The 1921 British Mount Everest Expedition

## Limited Edition Platinum Prints



(12) Cairns at a rest stop on the way up to the Kharta  
Glacier.

Photographer: George Leigh Mallory (1886-1924)  
Celluloid Negative, MEE21/0804

**TO ORDER**

For provenance and edition information please contact: [images@rgs.org](mailto:images@rgs.org)

# The 1921 British Mount Everest Expedition

## Limited Edition Platinum Prints



(13) 'Mount Everest in cloud from summit north of  
Advanced Base.'

Photographer: George Leigh Mallory (1886-1924)  
Glass Plate Negative, MEE21/0681

**TO ORDER**

For provenance and edition information please contact: [images@rgs.org](mailto:images@rgs.org)

# The 1921 British Mount Everest Expedition

## Limited Edition Platinum Prints



(14) 'Mount Everest in morning light, from camp at 22,500 ft.'

Photographer: George Leigh Mallory (1886-1924)

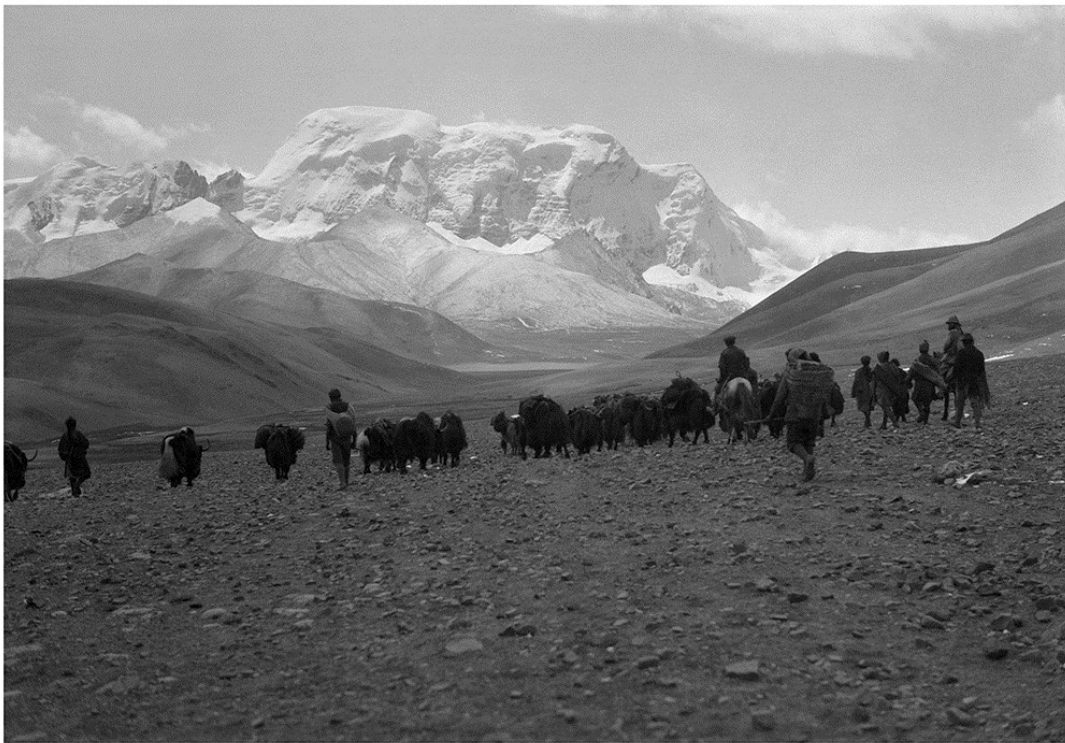
Glass Plate Negative, MEE21/0717

**TO ORDER**

For provenance and edition information please contact: [images@rgs.org](mailto:images@rgs.org)

# The 1921 British Mount Everest Expedition

## Limited Edition Platinum Prints



(15) **Untitled.**

Photographer: George Leigh Mallory (1886-1924)

Celluloid Negative, MEE21/0720

**TO ORDER**

For provenance and edition information please contact: [images@rgs.org](mailto:images@rgs.org)

# The 1921 British Mount Everest Expedition

## Limited Edition Platinum Prints



### (16) 'Camp at 20,000 feet - The last day.'

Photographer: George Leigh Mallory (1886-1924)

Glass Plate Negative, MEE21/0715

**TO ORDER**

For provenance and edition information please contact: [images@rgs.org](mailto:images@rgs.org)

**SALTO**<sup>®</sup>  
ULBEEK



# The 1921 British Mount Everest Expedition

## Limited Edition Platinum Prints



(17) **'Pumori from Second Advanced Camp, West Rongbuk Glacier.'**

Photographer: George Leigh Mallory (1886-1924)

Celluloid Negative, MEE21/0638

**TO ORDER**

For provenance and edition information please contact: [images@rgs.org](mailto:images@rgs.org)

# The 1921 British Mount Everest Expedition

## Limited Edition Platinum Prints



(18) 'View along ridge to 21,300 ft. snow peak. Summits of Chomo Lünzo and Makalu in centre.'

Photographer: Charles Kenneth Howard-Bury (1881-1963)  
Celluloid Negative, MEE21/0182

**TO ORDER**

For provenance and edition information please contact: [images@rgs.org](mailto:images@rgs.org)

**SALTO**  
ULBEEK

# The 1921 British Mount Everest Expedition

## Limited Edition Platinum Prints



(19) 'Camp at 20,000 feet, in cloudy weather after snowfall.'

Photographer: George Leigh Mallory (1886-1924)

Glass Plate Negative, MEE21/0709

**TO ORDER**

For provenance and edition information please contact: [images@rgs.org](mailto:images@rgs.org)

# The 1921 British Mount Everest Expedition

## Limited Edition Platinum Prints



### (20) 'Mount Everest from head of Kama chu.'

Photographer: George Leigh Mallory (1886-1924)

Glass Plate Negatives, MEE21/0660-0661

**TO ORDER**

For provenance and edition information please contact: [images@rgs.org](mailto:images@rgs.org)

# The 1921 British Mount Everest Expedition

## Limited Edition Platinum Prints



(21) 'Mount Everest, showing South Peak, North Peak and Col, from peak (20,500 ft.) above Advanced Camp.'

Photographer: George Leigh Mallory (1886-1924)

Glass Plate Negatives, MEE21/0669-0671

**TO ORDER**

For provenance and edition information please contact: [images@rgs.org](mailto:images@rgs.org)

# The 1921 British Mount Everest Expedition

## Limited Edition Platinum Prints



(22) 'Chomolönzo and Makalu from summit 21,200 ft. south-west of  
Advanced Base.'

Photographer: George Leigh Mallory (1886-1924)

Glass Plate Negatives, MEE21/0705-0706

**TO ORDER**

For provenance and edition information please contact: [images@rgs.org](mailto:images@rgs.org)

# The 1921 British Mount Everest Expedition

## Limited Edition Platinum Prints



(23) Left to right:

**'Looking up Kama Valley from 10,000 feet.'**

Photographer: Alexander Frederick Richmond Wollaston (1875-1930)  
Celluloid Negative, MEE21/0097

**'Valley of Lakes. Sanyun La in distance.'**

Photographer: Alexander Frederick Richmond Wollaston (1875-1930)  
Celluloid Negative, MEE21/0102

**'Kharta Valley looking West.'**

Photographer: Alexander Frederick Richmond Wollaston (1875-1930)  
Celluloid Negative, MEE21/0202

**'Looking down Kama Valley to junction of E. Makalu Glacier.'**

Photographer: Alexander Frederick Richmond Wollaston (1875-1930)  
Celluloid Negative, MEE21/0204

**'North peaks of Makalu from Kama Valley (looking S.W.)'**

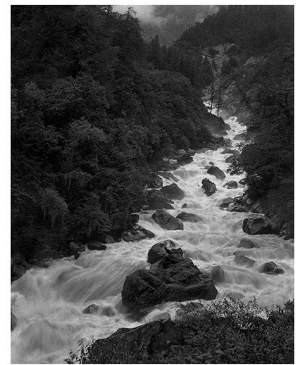
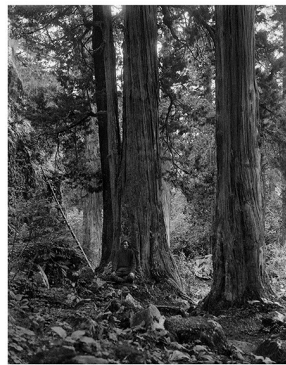
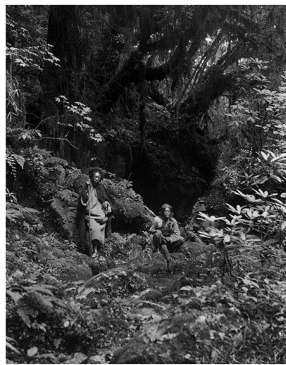
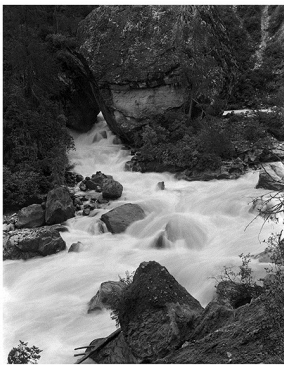
Photographer: Alexander Frederick Richmond Wollaston (1875-1930)  
Celluloid Negative, MEE21/0206

### TO ORDER

For provenance and edition information please contact: [images@rgs.org](mailto:images@rgs.org)

# The 1921 British Mount Everest Expedition

## Limited Edition Platinum Prints



(24) Left to right:

**'The Kama chu.'**

Photographer: Charles Kenneth Howard-Bury (1881-1963)  
Celluloid Negative, MEE21/0551

**'Headman and Ang-Jenge in forest of Kama chu.'**

Photographer: Charles Kenneth Howard-Bury (1881-1963)  
Celluloid Negative, MEE21/0554

**'Juniper trunks in forest of the Kama chu.'**

Photographer: Charles Kenneth Howard-Bury (1881-1963)  
Celluloid Negative, MEE21/0556

**'Rapids of the Kama chu: here it descends 800 feet in one mile.'**

Photographer: Charles Kenneth Howard-Bury (1881-1963)  
Celluloid Negative, MEE21/0558

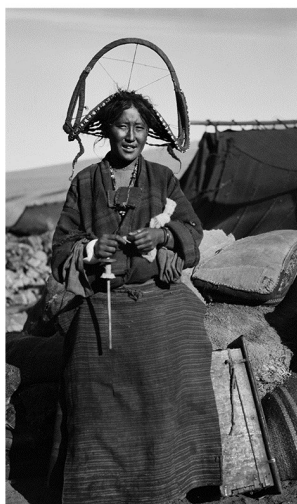
**TO ORDER**

For provenance and edition information please contact: [images@rgs.org](mailto:images@rgs.org)



# The 1921 British Mount Everest Expedition

## Limited Edition Platinum Prints



(25) Left to right:

**‘The Dzongpen of Kharta and his wife.’**

Photographer: Charles Kenneth Howard-Bury (1881-1963)

Celluloid Negative, MEE21/0200

**‘Tibetan woman.’**

Photographer: Alexander Frederick Richmond Wollaston (1875-1930)

Celluloid Negative, MEE21/0150

**‘Three nuns at Nunnery at Tatsang.’**

Photographer: Charles Kenneth Howard-Bury (1881-1963)

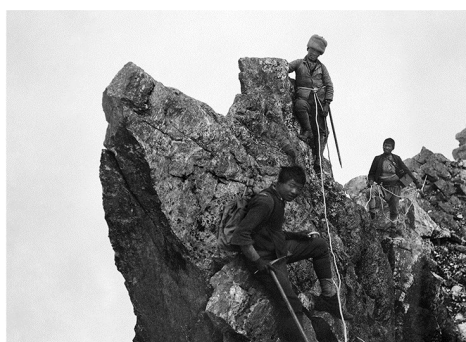
Celluloid Negative, MEE21/0523

**TO ORDER**

For provenance and edition information please contact: [images@rgs.org](mailto:images@rgs.org)

# The 1921 British Mount Everest Expedition

## Limited Edition Platinum Prints



(26) Left to right:

### Porters climbing along a ridge.

Photographer: Charles Kenneth Howard-Bury (1881-1963)  
Celluloid Negative, MEE21/0571

### 'Descending from Karpo Riwo, head of Kama Valley, Aug. 7<sup>th</sup>.'

Photographer: George Leigh Mallory (1886-1924)  
Celluloid Negative, MEE21/0805

### 'George Mallory climbing like a spider.'

Photographer: Guy Henry Bullock (1887-1956)  
Celluloid Negative, MEE21/0799

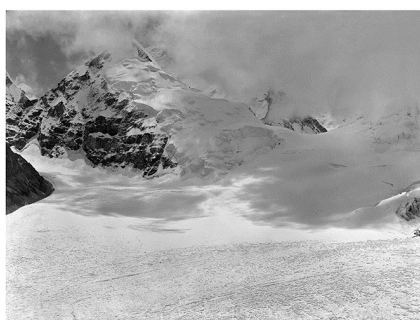
**TO ORDER**

For provenance and edition information please contact: [images@rgs.org](mailto:images@rgs.org)

**SALTO**  
ULBEEK

# The 1921 British Mount Everest Expedition

## Limited Edition Platinum Prints



(27) Left to right:

**'Everest and South Peak, in cloud, from Island, West Rongbuk Glacier.'**

Photographer: George Leigh Mallory (1886-1924)  
Glass Plate Negative, MEE21/0612

**Untitled.**

Photographer: George Leigh Mallory (1886-1924)  
Glass Plate Negative, MEE21/0773

**'Looking east from summit south-west of Advanced Base.'**

Photographer: George Leigh Mallory (1886-1924)  
Glass Plate Negative, MEE21/0700

**TO ORDER**

For provenance and edition information please contact: [images@rgs.org](mailto:images@rgs.org)

# The 1921 British Mount Everest Expedition

## Limited Edition Platinum Prints



(28) Left to right:

**'Makalu from camping shelf below Langma La.'**

Photographer: George Leigh Mallory (1886-1924)

Glass Plate Negative, MEE21/0664

**'Pethangtse from peak (20,500 ft.) above Advanced Base Camp.'**

Photographer: George Leigh Mallory (1886-1924)

Glass Plate Negative, MEE21/0668

**'Looking north from 17,000 ft. Base Camp, Kharta Valley.'**

Photographer: Alexander Frederick Richmond Wollaston (1875-1930)

Celluloid Negative, MEE21/0098

**TO ORDER**

For provenance and edition information please contact: [images@rgs.org](mailto:images@rgs.org)

# The 1921 British Mount Everest Expedition

## Limited Edition Platinum Prints



(29) 'View from Windy Col Camp, 22,500 ft., showing Everest, North Col and North Peak looking W.'

Photographer: Charles Kenneth Howard-Bury (1881-1963)  
Celluloid Negatives, C1827 & C1835

**TO ORDER**

For provenance and edition information please contact: [images@rgs.org](mailto:images@rgs.org)