



Data Science  
Campus

# Modelling multi-modal transport and service accessibility within the UK

**Guy Hannay**

Data Scientist | Data Science Campus

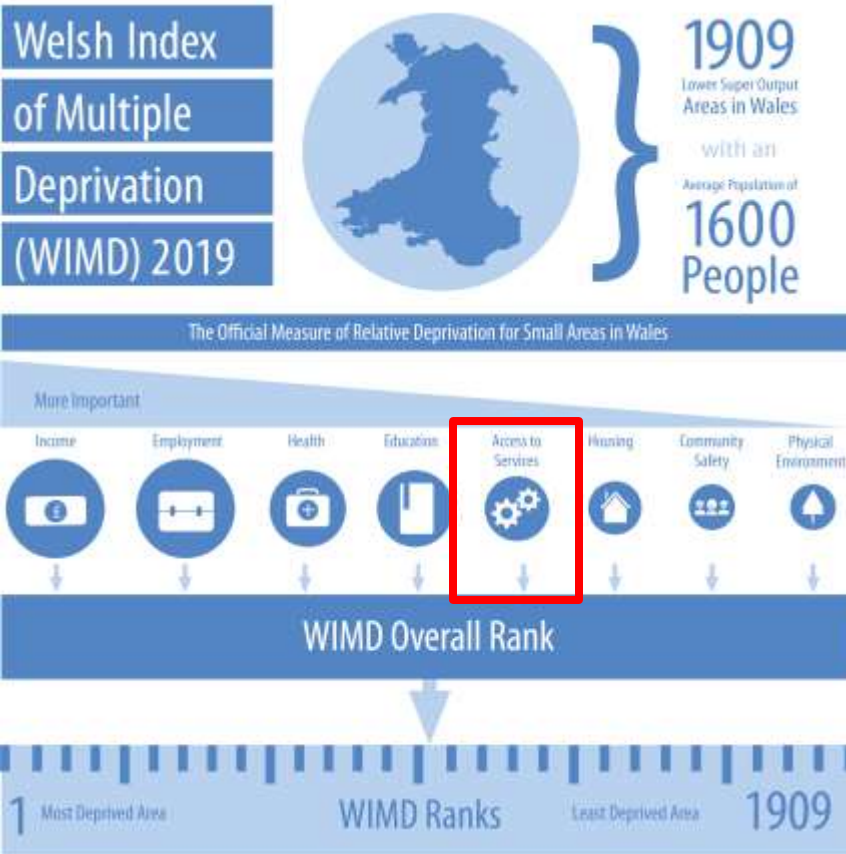


# Aim

Develop a tool that uses open-source transport data to analyse multi-modal travel in the UK to better understand whether, and how, people can access services.

# Background

Initially developed for Welsh Government to allow for more frequent and up-to-date calculations of access to services domain of the Welsh Index of Multiple Deprivation.



## Access to Services

- Pharmacy
- Food shop
- GP
- Post office
- Broadband
- Primary school
- Public library
- Sports facility
- Secondary school
- Petrol station



Official Statistics



Strategic Planning



Service Optimisation



Transport Infrastructure



Econometric Analysis



Disability Access

# Why?

For policy makers to:

- Introduce transparency
- Create reproducibility – query other use cases
- Use an open service

# How?

# Creating transport data feeds

- Transport data:
  - UK nationwide bus schedules
    - TransXChange files updated weekly (*DfT*)
  - Train
    - CIF files updates weekly (*Network Rail*)
  - Car, bicycle, and foot travel - *OpenStreetMap*



# Different transport, different sources, different formats

- **Solution:** General Transit Feed Specification (GTFS)
- GTFS are a popular type of transport data to draw directions and calculate travel times.
- They also work well with open source network builders, e.g. OpenTripPlanner.

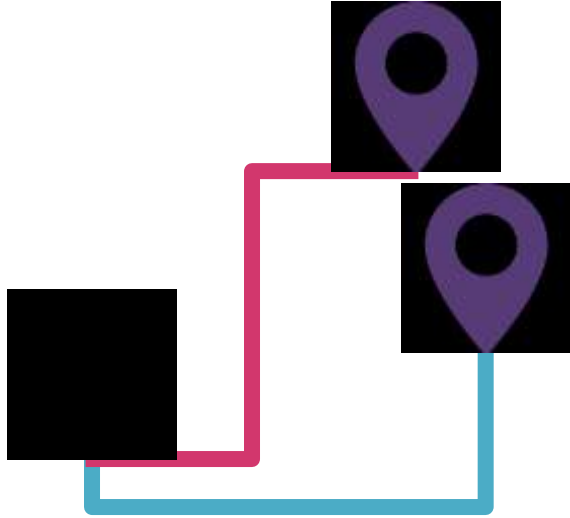
train data

GTFS converter

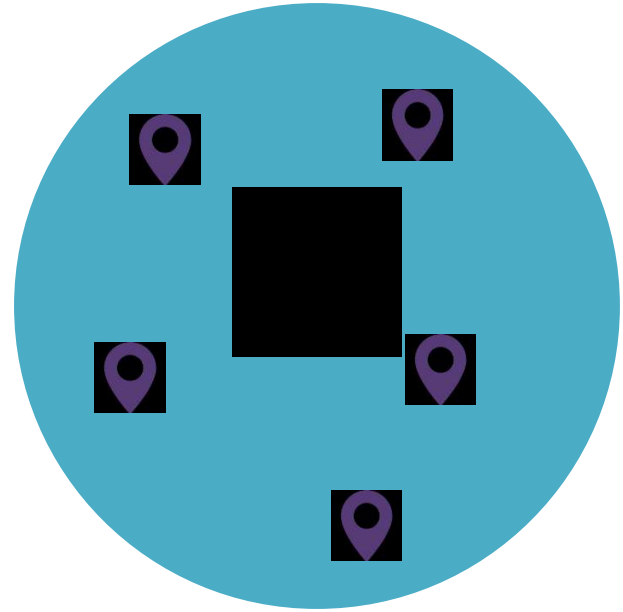
bus data

Network builder





Point to point



Isochrone

How many people in Wales can reach a sports venue, with a capacity greater than 10,000 within 90 minutes using public transport?



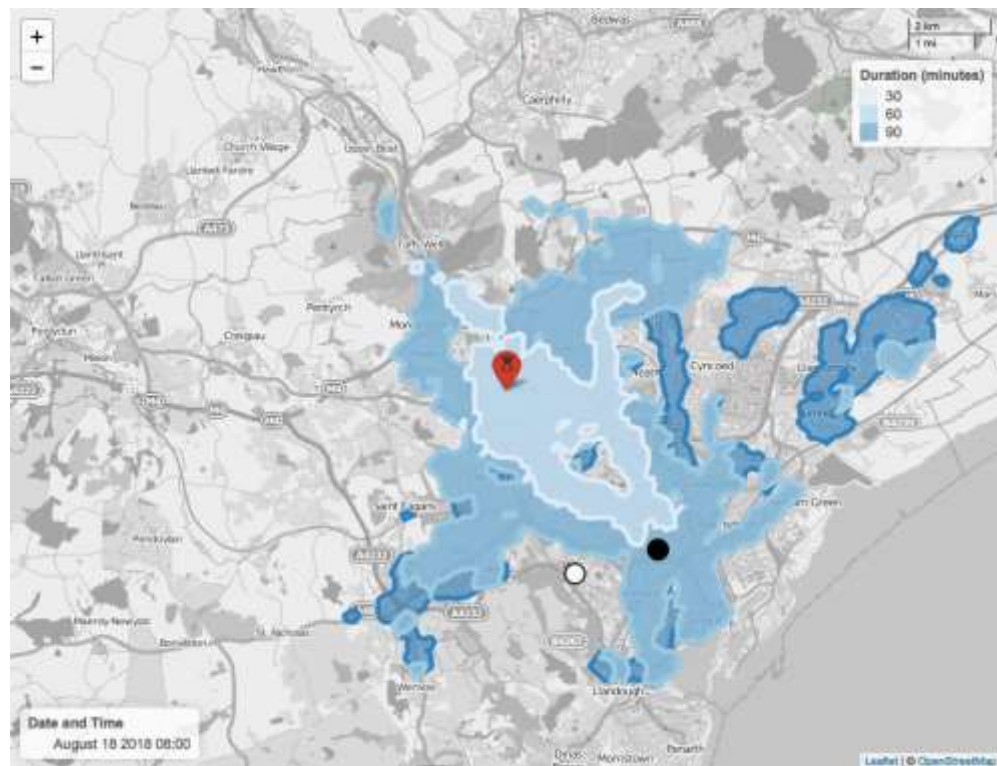
**Official Statistics**



A map of Wales showing the location of the sports stadiums (black circles) and the Medium Super Output Area (MSOA) locations (coloured circles)



Travel between Cardiff 008A and Cardiff City Stadium on 1st October 2018 between 15:00 and 19:00 at 20 minute intervals, using public transport.



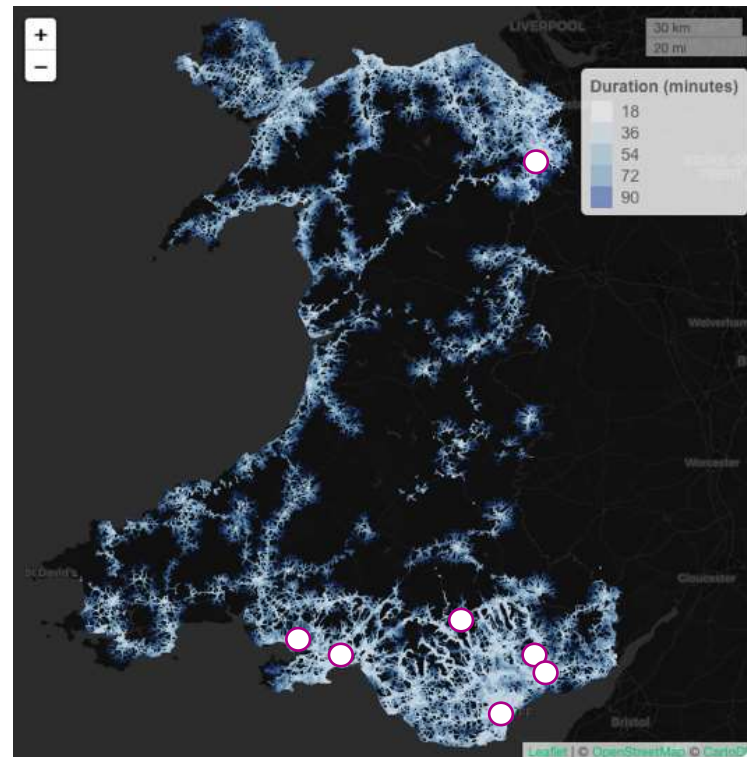
Maximum travel distance (within 90 minutes) from an area in Cardiff on 18th August 2018 between 08:00 and 22:00 at 20 minute intervals, using public transport

		Cardiff Park	Cardiff City Stadium	Cwmbran Stadium	Liberty Stadium	Parc y Scarlets	Penydarren Park	Principality Stadium	Racecourse Ground	Rodney Parade	SWALEC Stadium	Stadium Count
MSOA	Blaenau Gwent						72					1
	Bridgend	72	72					54			72	4
	Cardiff	36	36					36		90	36	5
	Denbighshire											0
	Merthyr Tydfil	90					36	90			90	4
	Pembrokeshire											0
	Rhondda Cynon Taf	54	54					36			54	4
	Swansea	90			18	72		90				4
	Wrexham								18			1
⋮	⋮	⋮	⋮	⋮	⋮	⋮	⋮	⋮	⋮	⋮	⋮	
MSOA Count	183	133	63	60	49	75	193	37	104	157	406	
<b>Total (Persons)</b>	<b>1,408,983</b>	<b>1,013,372</b>	<b>471,432</b>	<b>461,167</b>	<b>373,73</b>	<b>591,317</b>	<b>1,488,604</b>	<b>280,458</b>	<b>791,88</b>	<b>1,205,47</b>	<b>2,201,32</b>	



# 2,201,322

70% of the Welsh population using MSOA population centroids



○ 10,000+ capacity sports stadium

What is the most optimal Job Centre location (using Public Transport, by distance and cost) for those who are unemployed in Wales?



Service Optimisation

**Output Area**

**Location**

**Assigned  
Job Centre**

---

W00000001

Isle of Anglesey

Llangefni

W06000003

Conwy

Rhyl

W06000009

Pembrokeshire

Pembroke Dock

Output  
Areas

Out

Return

Both

N/A

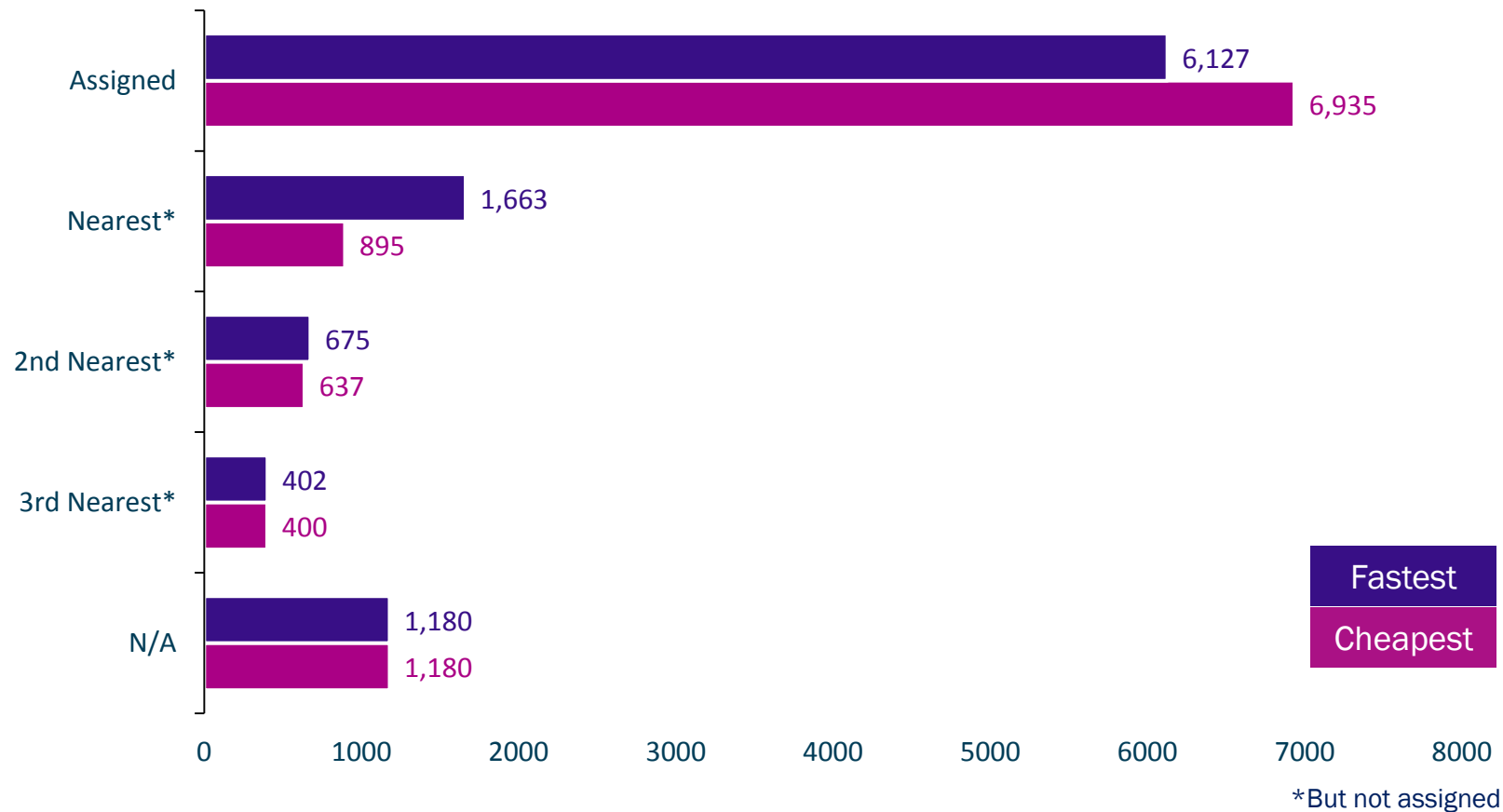
10,04

8,68

8,83

8,13

1,91



## Service Optimisation

e.g. What is the nearest (and most appropriate) Job Centre per household?

278

Job Centres

33

Average  
travel time

£3.66

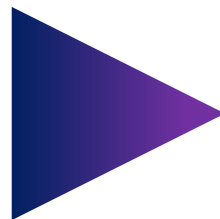
Average cost  
per journey

174

Longest travel  
time

£54.89

Most  
expensive  
journey



25

Average  
travel time

£2.49

Average cost  
per journey

151

Longest travel  
time

£30.22

Most  
expensive  
journey



## Official Statistics

e.g. Welsh Government to use for calculating WIMD (Welsh Index of Multiple Deprivation) statistics



## Strategic Planning

e.g. Valleys Taskforce, where to locate hubs to help improve prosperity in the South Wales valleys



## Service Optimisation

e.g. What is the nearest (and most appropriate) Job Centre per household?



## Transport Infrastructure

e.g. South Wales Metro, where should public transport stops be placed, and what should the new timetable be?



## Econometric Analysis

e.g. Can we measure night-time economy of regions such as Greater Manchester?



## Disability Access

e.g. Can we improve the way we calculate and measure UN Sustainable Development Goals?

# What's next?

- UK built network
  - Currently only available for Wales, Scotland, and England
- Google Cloud Platform