



Rural transport and the climate emergency – priorities and directions for action

Ian Philips

Dr Ian Philips, i.Philips@leeds.ac.uk , @ianphilipsits

<https://environment.leeds.ac.uk/transport/staff/972/dr-ian-philips>

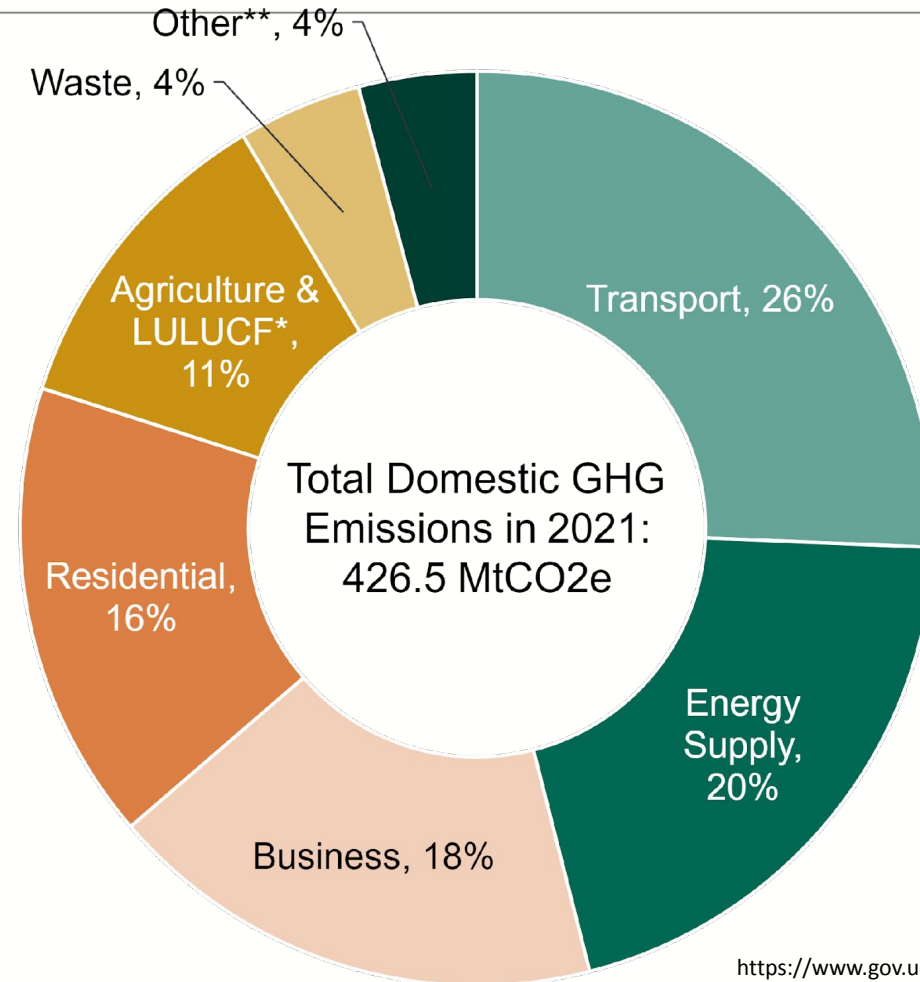
Geography in practice: the future of Rural
Mobility 27 March 2024

The decarbonization challenge

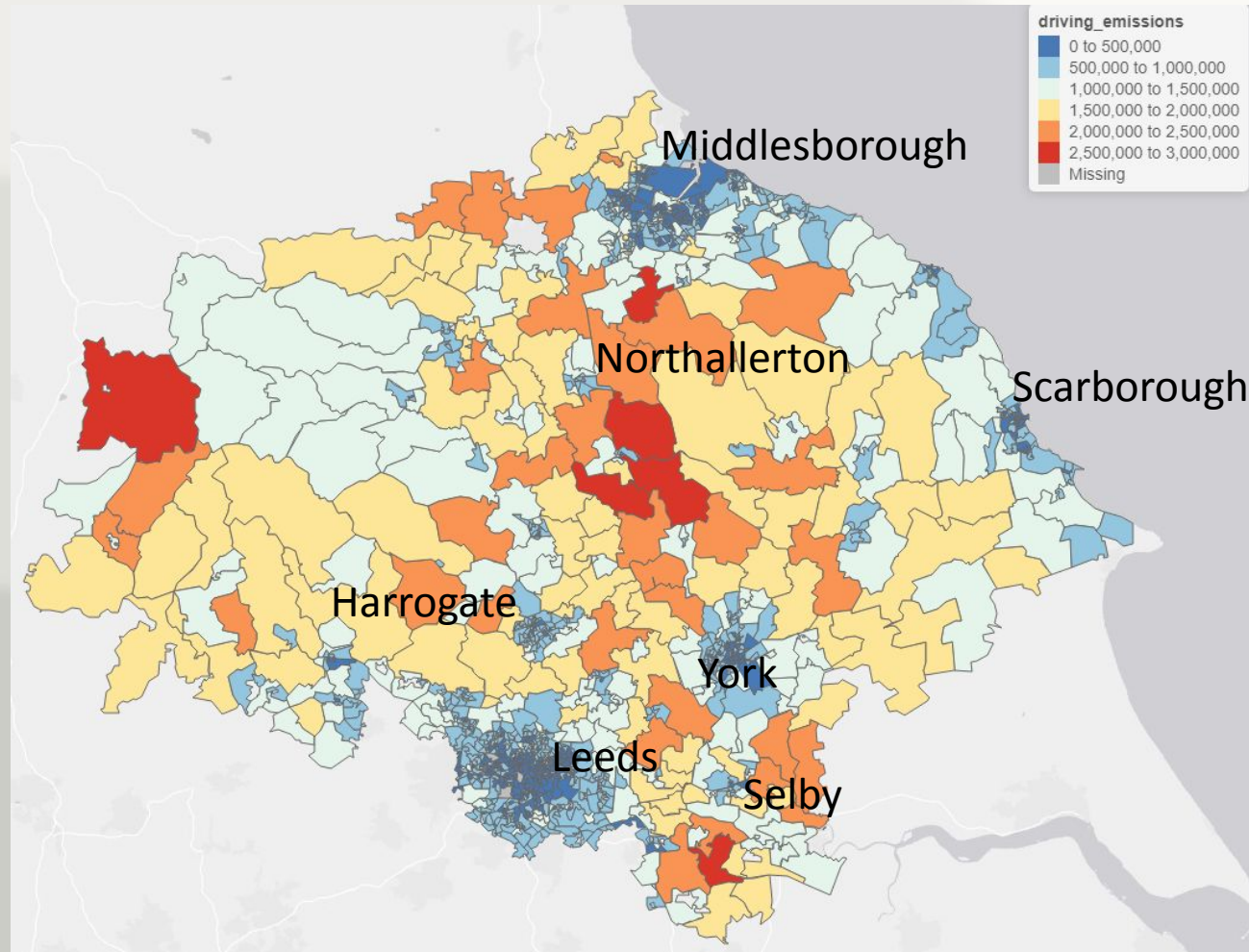


UNIVERSITY OF LEEDS

- Transport the largest contributor to UK emissions
- Cars 62% of domestic transport emissions
- not cutting fast enough
- SUV growth negating Energy efficiency savings
- Car mileage at sept 2023 ~ 5% lower than pre-covid



Rural areas matter for carbon



Vehicles registered to residents of
Lower Super Output Areas
in
North Yorkshire
Tees Valley
City of York
Leeds City Council

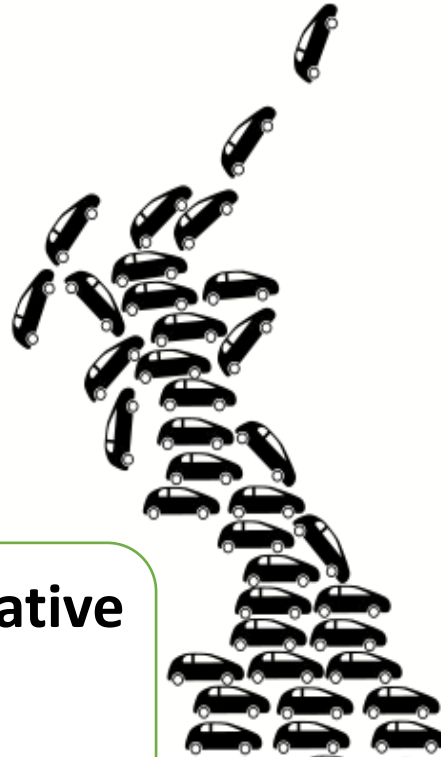
Analysis:
MOT data
Malcolm Morgan
Jillian Anable

Kg CO₂ / capita from driving per year

We need good data for good analysis for good decisions



UNIVERSITY OF LEEDS



CARS - Connecting Administrative vehicle data for Research on Sustainable Transport

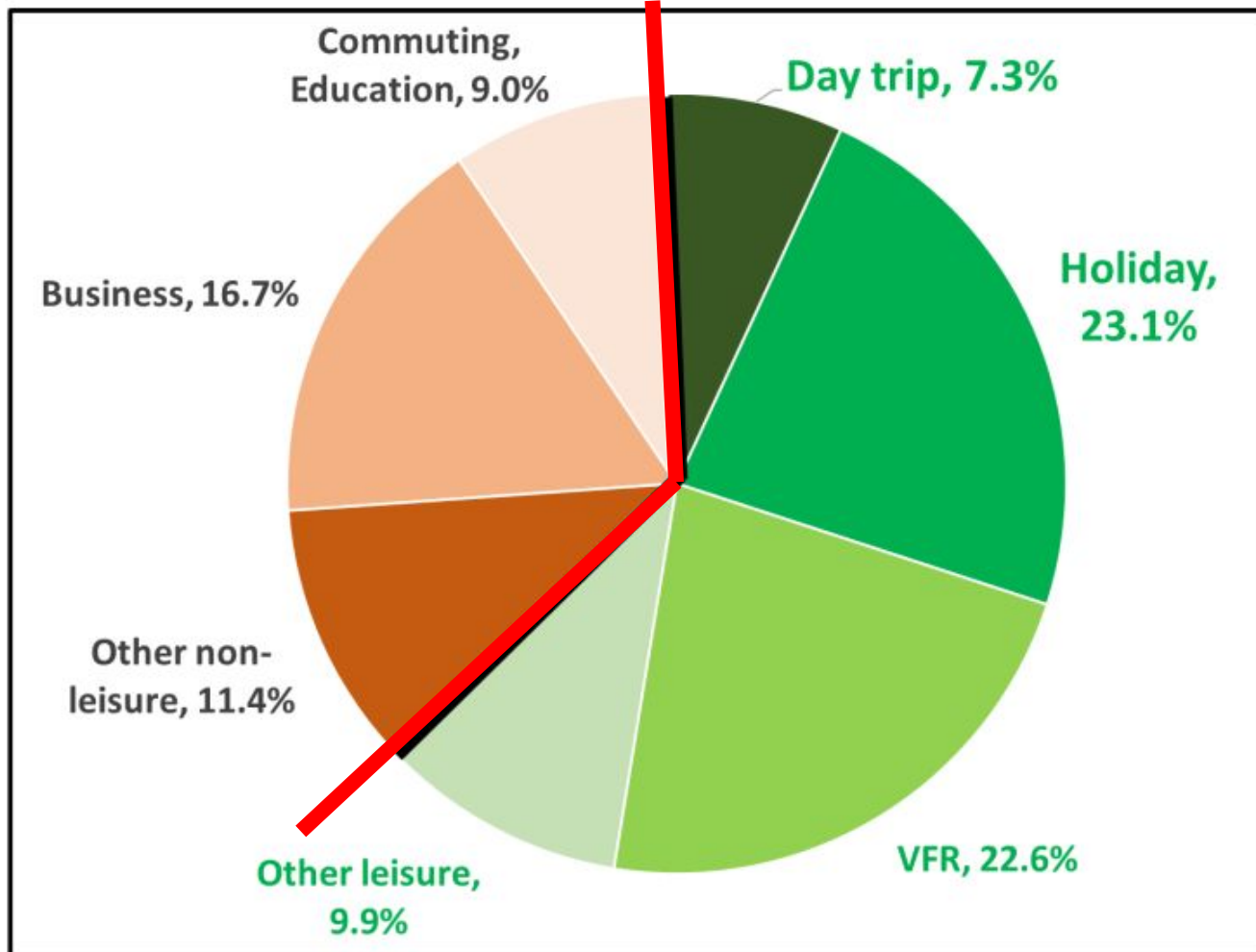
Car use in Rural Areas



UNIVERSITY OF LEEDS

- Leisure travel by visitors
- Car dependence of local population

Leisure travel (rural areas = major leisure destination)

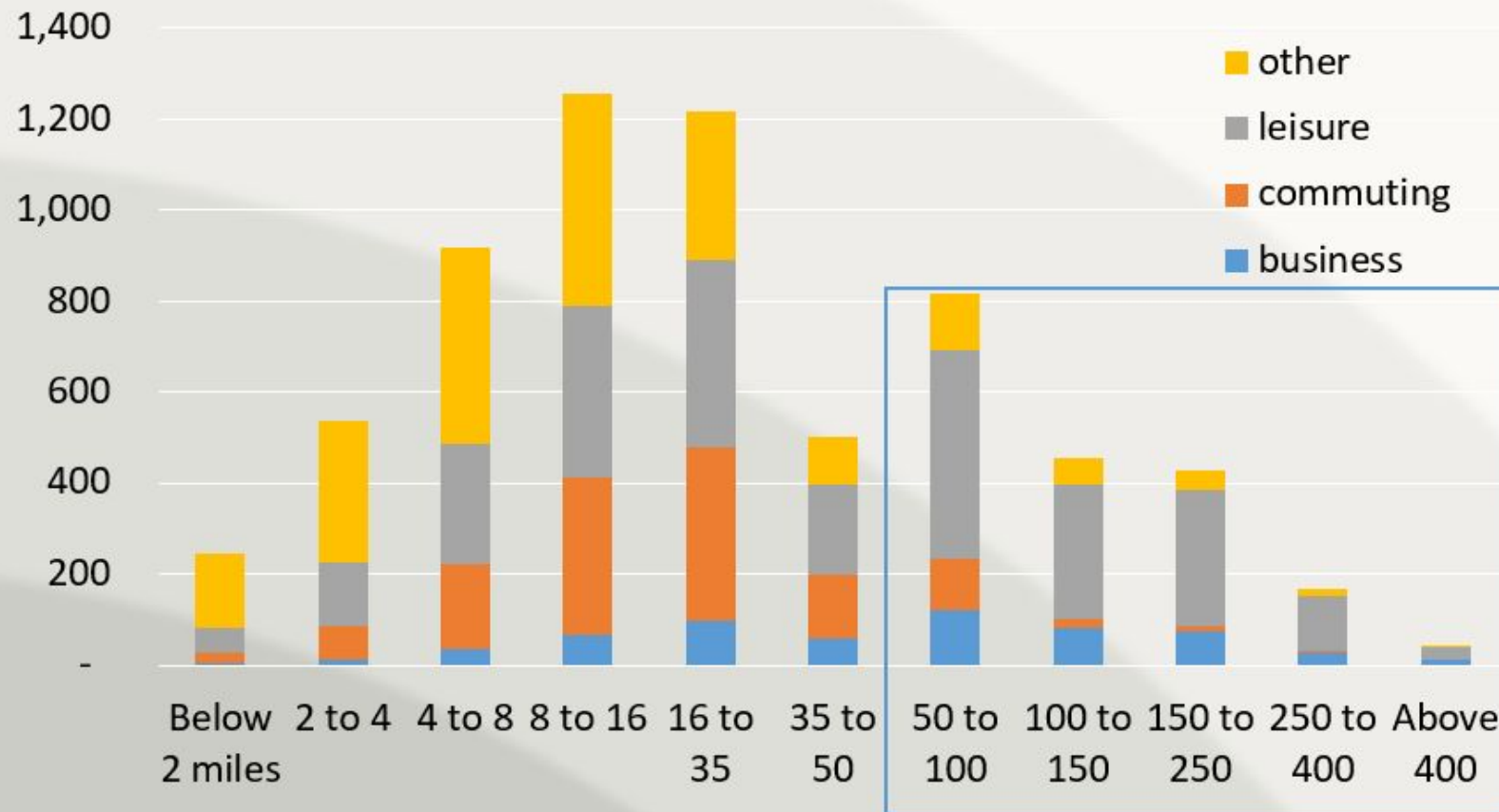


Leisure travel = 63% of all miles travelled by all modes

Leisure travel



UNIVERSITY OF LEEDS

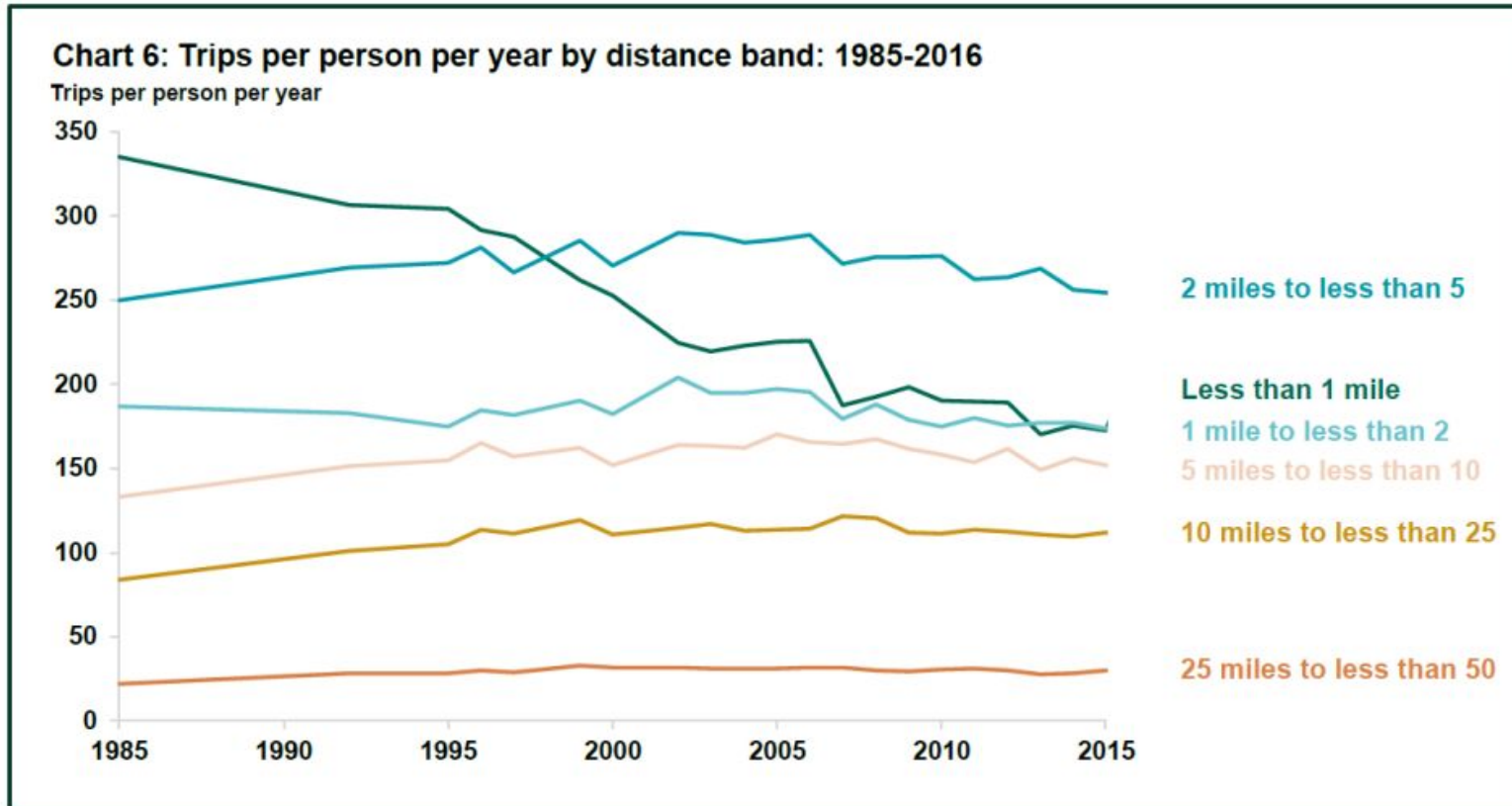


Nearly 2/3 of LDT miles are for leisure purposes



Source: NTS 2015 - 2017, pooled weighted N=46,603

Leisure travel



Number of short trips declined
But longer trips did not

Long car trips 3% of trips
~ 1/3 of mileage

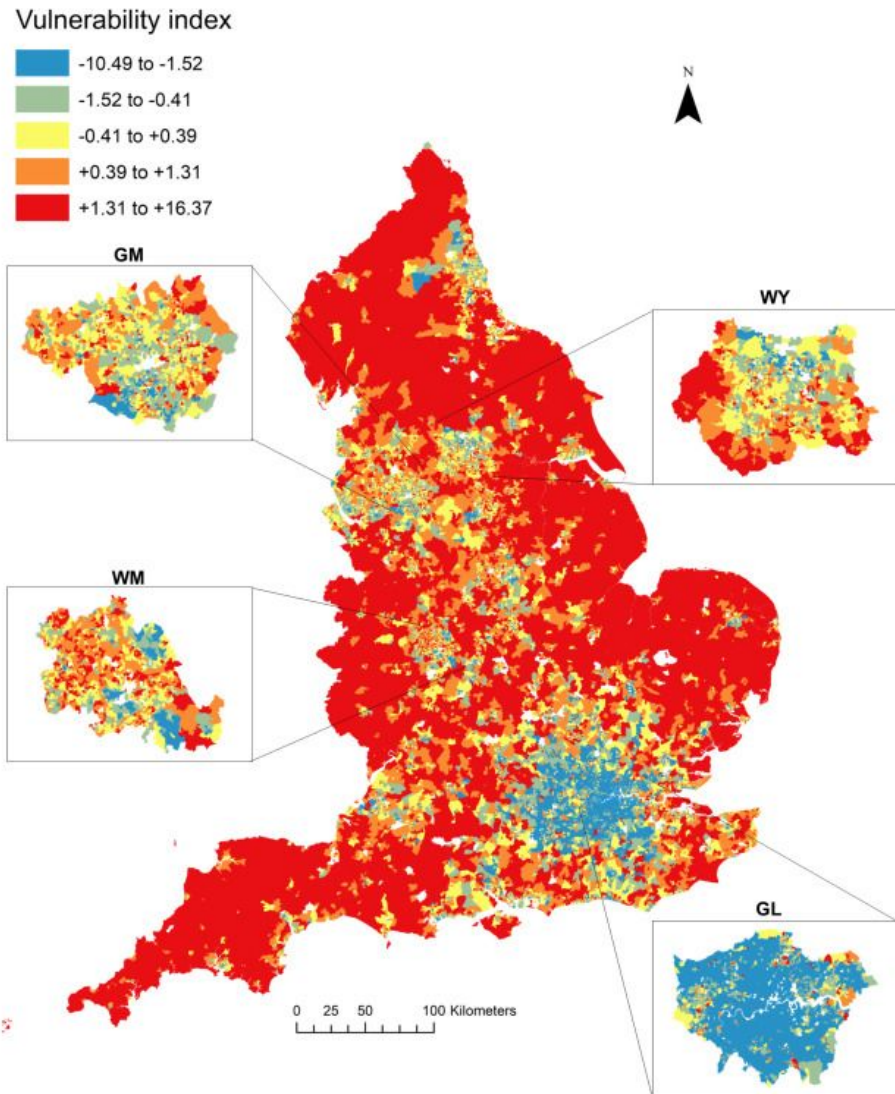
DfT (2018) Analyses from the National Travel Survey, DfT Statistical Release.

Analysis of NTS 2015 - 17 by
Jillian Anable

Car dependence and vulnerability



UNIVERSITY OF LEEDS



Rural areas are economically and socially vulnerable to continued car dependence

High expenditure on motoring
Poor public transport

Increases challenge of rural decarbonisation

<https://doi.org/10.1016/j.jtrangeo.2019.05.009>

Priorities and directions for action: general principle



UNIVERSITY OF LEEDS

- “relying on **technical solutions alone is insufficiently rapid** and risky, and that policies influencing the **demand** for travel and **mode switching** should have a more prominent role (CCC, 2018; CCC, 2019). Here the demand for the mobility itself (i.e. the distances travelled and the travel modes used) will be at least as crucial to future energy demands as the fuel types and efficiencies of the vehicles.”

- 1. Avoid**
- 2. Shift**
- 3. Improve**

- Brand, Anable , Marsden
- <https://low-energy.creds.ac.uk/mobility/>

BUT



UNIVERSITY OF LEEDS

- ~~Avoid~~ > Shift > Improve

- Demand reduction removed from current policy , over reliance on EV uptake

Directions for action.



UNIVERSITY OF LEEDS

Positive Low Energy Futures.

scenarios

Energy demand pathways

Equitable / fair

Integrated with other sectors

A few suggestions

- Cut car use
- Increase occupancy
- Don't build roads
- Increase proximity,
- Localise services
- Fund active travel
- Carrot and stick policies
- Build co-benefits into MaaS
- Price in all costs and benefits
- Limit SUVs



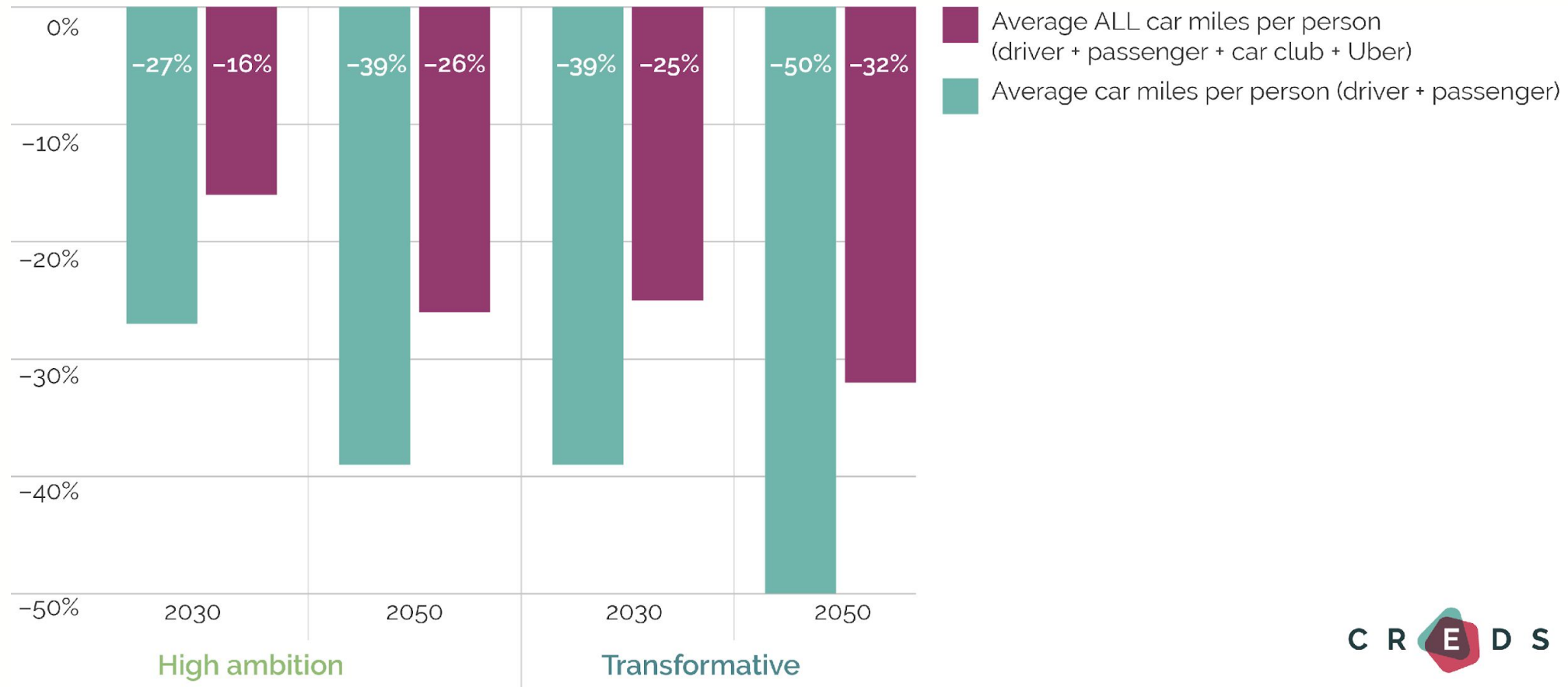
Positive low energy futures

<https://low-energy.creds.ac.uk/introduction/>

Major reduction in car mileage needed



UNIVERSITY OF LEEDS



Policy Options Look Different Rural / Urban



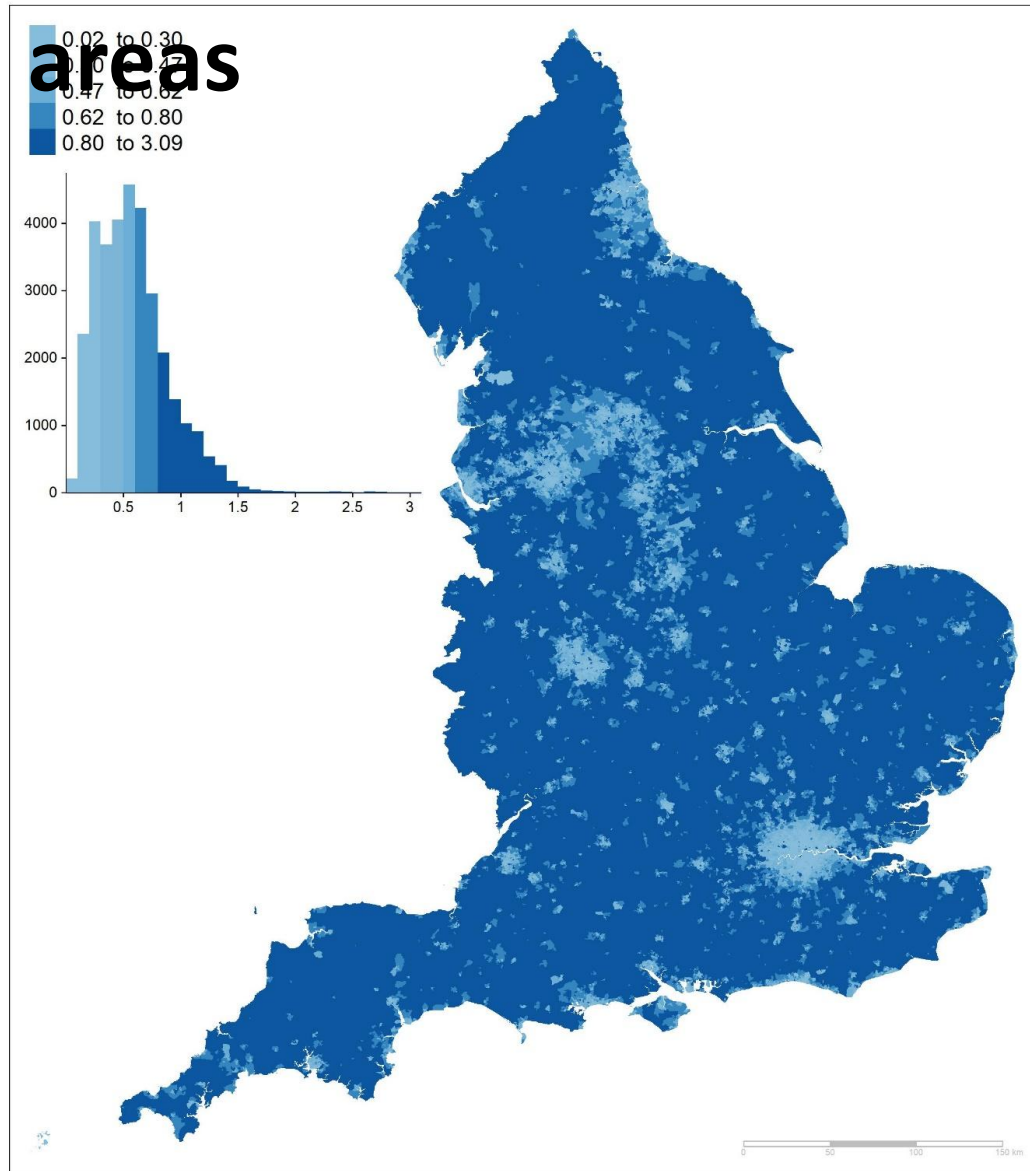
■ Avoid ■ Shift ■ Improve



■ Avoid ■ Shift ■ Improve

- Thinking of ways to **avoid** travel is something everywhere can do
 - Proximity to services in rural areas?
 - What are the options to service these places with fewer trips?
- **Shift** is easier in some places than others
 - Creating alternatives
 - Strong social arguments
- **Improve** needs to happen everywhere
 - Other opportunities (e.g. farming, utilities)

Opportunity for shift especially in rural areas



E- bike carbon reduction capability is largest in rural areas

A lot of rural car trips are 5-15 miles long = the ideal range for e-bikes.

- **Dark blue** = large Ebike carbon reduction capability
- **Light blue** = more modest e-bike carbon reduction capability

E-bikes in the Lake District



UNIVERSITY OF LEEDS



- Surveys in 2020 and 2021.
- People ride alot in hilly rainy places!
- Mode substitution
- Interest in integrated tickets and e-bike hire scheme.
- Support for car restraint
- BUT people tell us getting to the Lakes without a car is hard and PT is poor.